

AVANI

Frankfurt City

Turning up the beat in Frankfurt



Germany's first Avani opens its doors in January 2024

Frankfurt's first Avani hotel. Whether you're in town for business, leisure or both, Avani Frankfurt City Hotel puts you right in the middle of the action. Bringing upbeat style to ritzy downtown, it's only 10 minutes on foot to the banking district, the Main River, and less than that to the Zeil, Frankfurt's well-known shopping street.

With an S/U-bahn station just down the road, the Messe Frankfurt fairground is just four stops away, and getting around the rest of the city is a breeze.

Comfy accommodations

Our 256 rooms and suites are spread across seven storeys. Each bursts with style and the latest in mod cons, including a power shower and coffee machine for perky mornings, and high-tech toys like Chromecast TV and Bluetooth speakers to wind down with at night. Choose your ideal set-up – all by yourself, party of four, or swanky suite life – then bring on the chilling, Avani style.

34 Standard Single Rooms

18 sqm | Queen bed for one

166 Standard Double Rooms

26 sqm | Queen bed for two

34 Superior Rooms

26 sqm | King bed for two

5 Family Rooms

29 sqm | King bed or twin beds + sofa bed for four

8 Deluxe Rooms

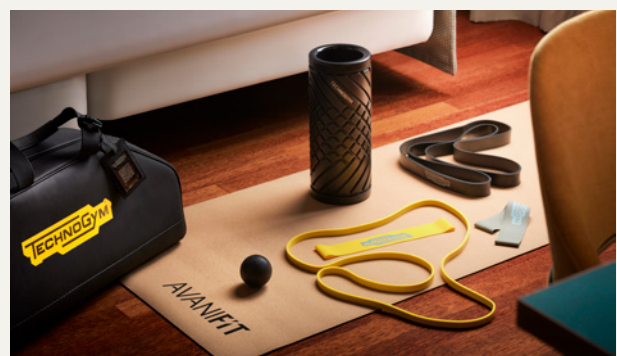
30 sqm | King bed or twin beds + sofa bed for four

4 Deluxe Rooms with Balcony

40 sqm | King bed or twin beds + sofa bed for four

5 Suites

35 sqm | King bed or twin beds + sofa bed for four



Dining your way

Whether you're rushing between meetings, or have all the time in the world, we make dining convenient and a pleasure, with fresh, healthy flavours from morning till night, and in-room dining available 24/7.



Good morning

Our breakfast buffet is quite the spread, with fresh coffee and juice, and Germany's famous baked goods still warm from the oven. Fill up on the continental selection, as well as hot dishes from live cooking stations manned by our smiling chefs.

The Pantry

The Pantry's got what you need, when you need it - from healthy wraps and smoothies for on the go, to bowls and matcha tea to linger over and enjoy. It's also the place to mingle in the evenings, with colourful cocktails accompanied by a sinful slice of cake (or two).

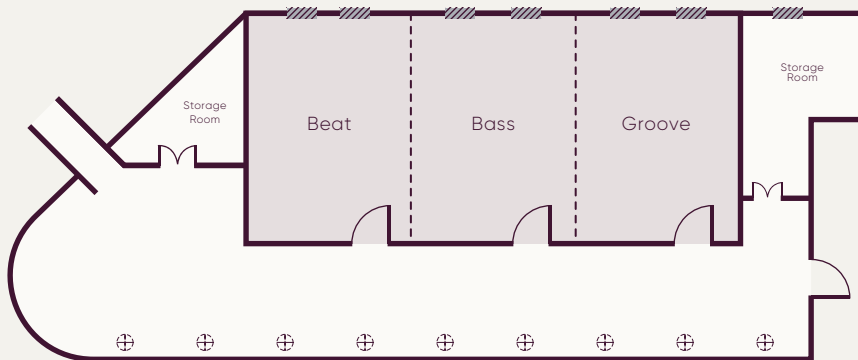


AvaniFit

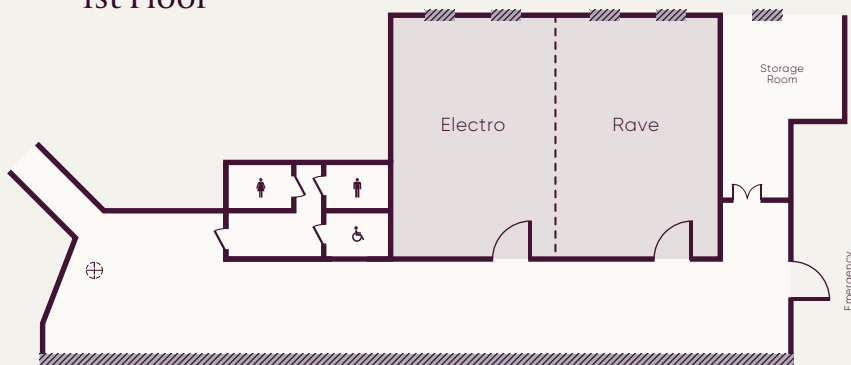
After all that eating, you may want to burn off a few calories, and we make it easy at AvaniFit with cardio machines and weight stations galore. Chill afterwards in the steam or sauna. For guests who prefer their workouts in the great outdoors, the nearby Main River has some fantastic jogging trails.

Statement events

Getting down to business is a pleasure with Avani. Our five meeting rooms, all with natural daylight, can host workshops and training sessions for up to 140 people. We keep the creativity flowing with imaginative coffee breaks, themed dinners, and team building on the town.



1st Floor



Ground Floor

CONTACT FOR
GROUP BOOKINGS
nhgroupsales.de@nh-hotels.com
+49 (0)30 223 801 35

Meeting room name	Area (sqm)	Height (m)	Seating							Cabaret	Floor	Day-light
			Banquet	Imperial	Cocktail	Classroom	Theatre	U-shape				
Electro	60	2,9	32	16	40	30	40	16	20	0	<input checked="" type="checkbox"/>	
Rave	60	2,9	32	16	40	30	40	16	20	0	<input checked="" type="checkbox"/>	
Electro & Rave	120	2,9	64	32	80	60	80	32	40	0	<input checked="" type="checkbox"/>	
Beat	60	2,9	32	16	40	30	40	16	20	1	<input checked="" type="checkbox"/>	
Bass	60	2,9	32	16	40	30	40	16	20	1	<input checked="" type="checkbox"/>	
Beat & Bass	120	2,9	64	32	80	60	80	32	40	1	<input checked="" type="checkbox"/>	
Groove	60	2,9	32	16	40	30	40	16	20	1	<input checked="" type="checkbox"/>	
Bass & Groove	120	2,9	64	32	80	60	80	32	40	1	<input checked="" type="checkbox"/>	
Beat & Bass & Groove	180	2,9	96	48	120	90	120	48	60	1	<input checked="" type="checkbox"/>	



Location

Frankfurt is easy to get around, and with such a prime location, we make it even easier. We're only 200 m from Konstablerwache Station where 12 S/U-bahn lines intersect. The Messe Frankfurt convention halls are four stops away, and the banking district a few minutes on foot.

In town to sightsee? You can also walk to the nearby shopping of the Zeil, the sights of old Römerberg and the Main River.

Getting to the hotel is a breeze, with direct commuter trains from Frankfurt Airport and Hauptbahnhof Railway Station.



Avani Frankfurt City Hotel
Vilbeler Str. 2
60313 Frankfurt am Main

T: +49 (0)69 9288590
E: frankfurtcity@avani-hotels.com

AVANIHOTELS.COM