



CONVENIENT ACCESS

Vienna International Airport
20 km / 25 minutes by car

Railway station Westbahnhof
3 km / 10 minutes by car

Railway station Hauptbahnhof
3 km / 10 minutes by car

Underground U1, U2, U4 at Karlsplatz
100 m / 2 minutes on foot

Public parking
with direct access to the hotel



View of Volksgarten, Museums and Parliament © WienTourismus/Christian Stemper



SITUATED FOR DISCOVERY

In the heart of Vienna, where else? The Ringstrasse. Just steps away from the city's most elegant shopping streets. Opera. Museums. Baroque gardens. Vienna doesn't believe in sleep: top of the town clubbing addresses are within high-heel radius.

- 01 Hofburg Conference Centre - 600 m / 1200 steps
- 02 Hofburg Imperial Palace - 600 m / 1200 steps
- 03 Austrian National Library - 600 m / 1200 steps
- 04 Spanish Riding School - 600 m / 1200 steps
- 05 Vienna State Opera - 100 m / 200 steps
- 06 St. Stephen's Cathedral - 900 m / 1800 steps
- 07 MuseumsQuartier - 500 m / 1000 steps
- 08 Museum of Art History - 400 m / 800 steps
- 09 Natural History Museum - 400 m / 800 steps
- 10 Secession - 400 m / 800 steps
- 11 Academy of Fine Arts - 200 m / 400 steps



creative meetings

LE MERIDIEN VIENNA

Robert-Stolz-Platz 1
1010 Vienna
Austria
T +43 1 588 90 0
F +43 1 588 90 90
lemeridienvienna.com

NEW HEIGHTS OF INSPIRATION

Discover design throughout the hotel. Art enthusiasts find here safe harbor from the shallow. Located just short distances from the city's greatest artworks. Sleep, meet and think at Le Méridien - an individual design hotel for really curious people.

STIMULATING GUESTROOMS

Space, light, view: 294 guest rooms and suites – functionalism of service, mastery of style, a triumph of atmosphere. Color nuances, sensory delights, noble parquet floors, plush carpets. Revivifying baths – Victorian style in frosted glass and steel. Luxurious massaging spa showers. And: at our desks you will want to work longer. Or power nap on a luxurious mattress. Audio and visual: the XL multimedia system. Free Wi-Fi.

ROOMS

- 49 Classic Rooms
- 54 Superior Rooms
- 61 Deluxe Rooms
- 58 Executive City Rooms
- 39 Executive City Twin Rooms
- 4 Rooftop Terrace Rooms
- 6 Corner Park Rooms
- 6 Studio Rooms

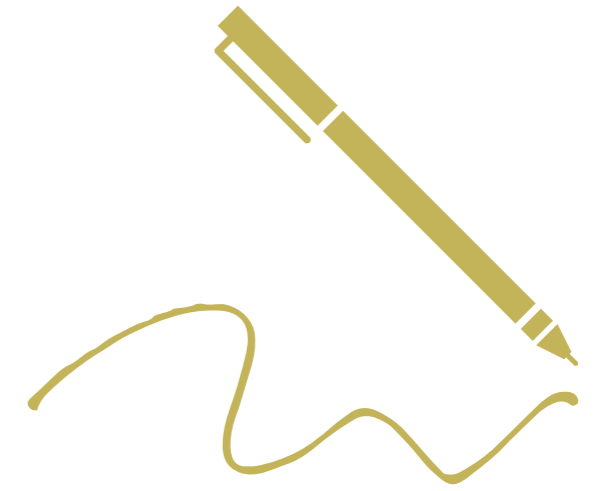
SUITES

- 12 Executive Suites
- 3 Family Suites
- 2 Rooftop Terrace Suites

Spacious terraces with a park view are available in the Rooftop Terrace Rooms and Rooftop Terrace Suites.

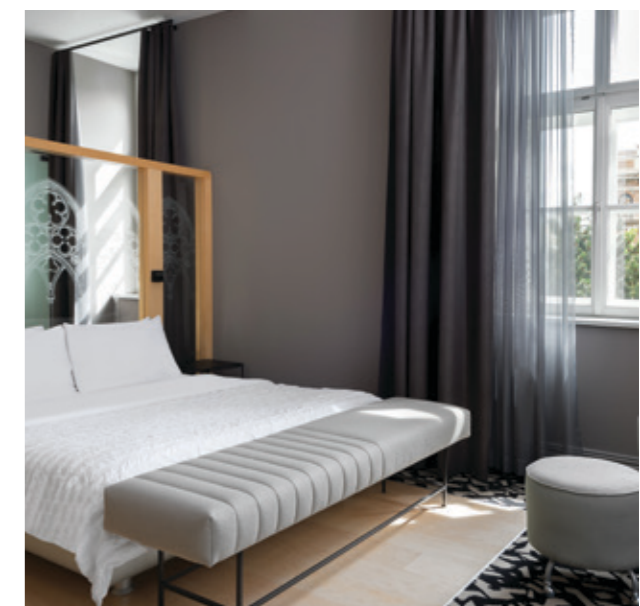
WELLNESS + WORKOUT

Relax: pool, sauna, steam bath, jacuzzi. Work out with locals and a personal trainer on modern, high performance equipment (complimentary for the hotel residents). You'll be unstoppable.



SPARK DISCOVERY AND ILLUMINATE INSIGHTS WITH CREATIVE MEETINGS BY LE MERIDIEN, DESIGNED TO UNLOCK INSPIRATION AND FOSTER INNOVATION.

N 48° 12' E 16° 21'
DESTINATION UNLOCKED



Le MERIDIEN

ENGAGE. DISCOVER. CREATE.

CREATIVE SPACES

Shift mind-sets and enhance focus with an environment that stimulates the senses. Versatile seating fosters dynamic interaction, while signature scents, styling and sounds cultivate creativity.

SPACE TO EXPAND IDEAS

Artfully designed, Le Méridien Vienna offers 7,679 square feet (714 square metres) of event space, 294 guestrooms and suites. Creative people gather to converse, debate and exchange. Guests and locals enjoy local culinary offerings and experiences inspired by a coffeehouse environment by day and a cocktail-inspired setting by night.

SOPHISTICATED SERVICES

+ SIMPLIFIED PLANNING

Everything you need: Le Méridien.
 Everything original, stylish and state-of-the-art: Le Méridien.
 Everything to impress your guests: Le Méridien.
 Le Méridien plans and organises with you.
 Meeting rooms - up to 300 persons. Tailormade expert support - at your service. New Creative Meetings concept and high-tech of course: electronic billboards, mobile 40" LED screens.
 Car showcase in the middle of the hotel. We will take care of an infinite admiration..



INSPIRATION IGNITED

From locally inspired flavours to cultural experiences, our meetings create an immersive atmosphere that brings the destination in.

INSPIRING CUISINE

Taste the uncommon.

YOU

A place for relaxed enjoyment. Laid-back and surprisingly sparkling. YOU is spontaneous: nothing planned, everything possible. Fun by the plate, coolness by the glass, music that's hand-picked.

Champagne Bar

Chic breakfast – exceptional
 Cool lounge atmosphere by day – Chilled at night
 Always - the best coffee, Illy
 At any time of the day - Oysters and champagne

AUTHENTIC EXPERIENCES

Find inspiration in the destination with the flavours and attractions of the local culture. Every experience is tailored to create a sense of place and offer a shift in perspective. Like our creative coffee breaks:

- Brain Food "Powerfood"
- Candy Bar
- Viennese traditional "Brettljause"

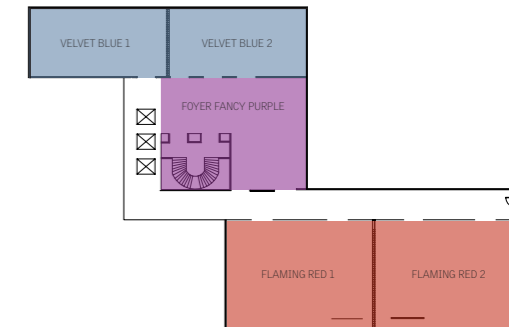
FLOOR LEVEL 0



ROOM NAME	length x width (ftxft)	area (ft² / m²)	height (ft)	boardroom	u-shape	cabaret	class room	theatre	daylight
The Table	30.8x15.7	484 / 45	9.8	20	-	-	-	-	yes
Racing Green	21.6x16.4	354 / 33	9.8	14	15	-	12	30	yes
Not Really Pink	32.4x11.5	377 / 35	9.8	20	15	-	10	20	yes
Kind of Beige	29.9x16.4	409 / 38	9.8	14	15	-	12	30	yes
Shades of Grey	22.3x11.8	269 / 25	9.8	12	-	-	-	-	yes
Blazing White	47.6x17.0	807 / 75	9.2	26	28	24	24	50	yes

FLOOR LEVEL -1

ROOM NAME	length x width (ftxft)	area (ft² / m²)	height (ft)	boardroom	u-shape	cabaret	class room	theatre	banquet
Velvet Blue 1	24.0x16.4	376 / 35	10.8	8	6	-	12	20	-
Velvet Blue 2	38.0x16.4	624 / 58	10.8	18	20	24	24	40	24
Velvet Blue 1+2	59.0x16.4	1000 / 92	10.8	24	22	36	36	60	36
Flaming Red 1	53.0x34.4	1823 / 170	10.8	34	30	90	80	150	90
Flaming Red 2	53.0x34.4	1823 / 170	10.8	34	30	90	80	150	90
Flaming Red 1+2	106.6x34.4	3667 / 341	10.8	64	60	180	160	300	180
Foyer Fancy Purple	55.8x16.4 230x16.4	1292 / 120	10.8	-	-	-	-	-	-



STATE-OF-THE-ART MEETING SPACE, INSPIRING CUISINE AND MODERN DESIGN ELEMENTS STIMULATE NEW IDEAS, CREATING LIMITLESS OPPORTUNITIES FOR ENGAGEMENT AND DISCOVERY.

