



STARHOTELS®  
PREMIUM

Anderson  
MILANO



# Anderson

MILANO



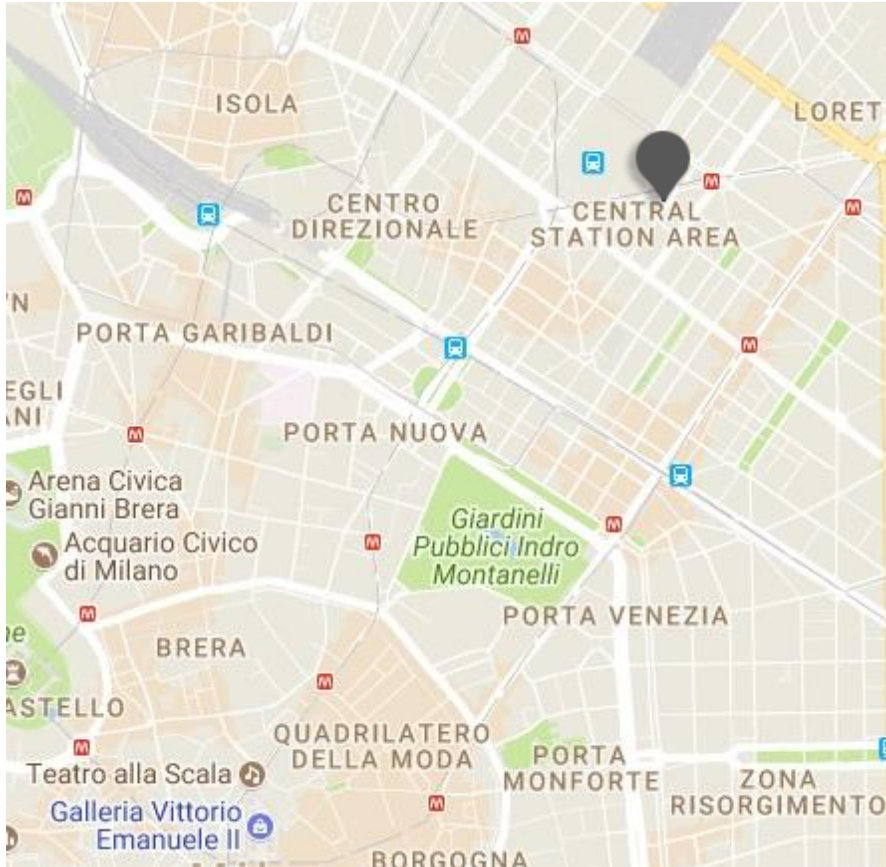
## *Metropolitan chic*

With its cosmopolitan atmosphere, elegant interiors enriched with red & black precious silks, velvets and leather finishes, and its strategic location in the heart of the city, facing the Central Station, the Starhotels Anderson is the favourite choice of famous Italian stylists.

It is only a brief walk from the city's historic centre and the many prestigious shops of the Galleria Vittorio Emanuele.

# Anderson

MILANO



## Location

In the heart of Milan, only 100 meters from the Central Station and a short distance from the skyscrapers of the new Porta Nuova district. The city's historic centre and the main spots are within easy reach

## Distances

### Railway station:

air terminal Km 0,1

**Highway:** Km 6

### Underground:

MM2 Caiazza - MM2 - MM3 Stazione Centrale

### Airport:

Linate Km 8 - Malpensa Km 50

### Fairgrounds:

Milano (City) Km 4 - Milano (Rho) Km 12

Piazza Luigi di Savoia, 20 - 20124 Milano - Italy

T +39 02 6690141 F +39 02 6690331

[anderson.mi@starhotels.it](mailto:anderson.mi@starhotels.it)

[starhotels.com](http://starhotels.com)



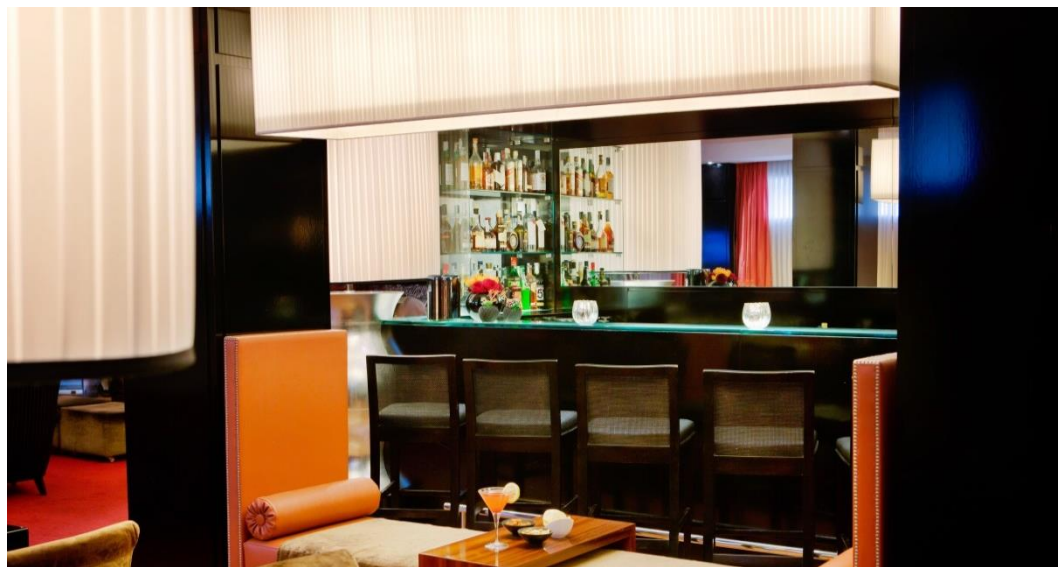
# Anderson

MILANO

## Restaurant & Bar

The Black Bar & Restaurant offers an unrivalled blend of haute cuisine and design. In the evocative setting of its elegant interiors, the Chef creates a skilful combination of local and international dishes, with all finest ingredients.

The sophisticated bar is the ideal spot for a good coffee, a quick lunch or a cocktail in a discreet yet cosmopolitan atmosphere.



# Anderson

MILANO



## 106 Rooms

42 Superior  
60 Deluxe  
4 Grand Deluxe

The 106 rooms and suites are furnished in the unique, refined style that has made Milan famous all over the world, with an evocative combination of red and black and complemented by precious silk and leather details.







## Meetings & Events

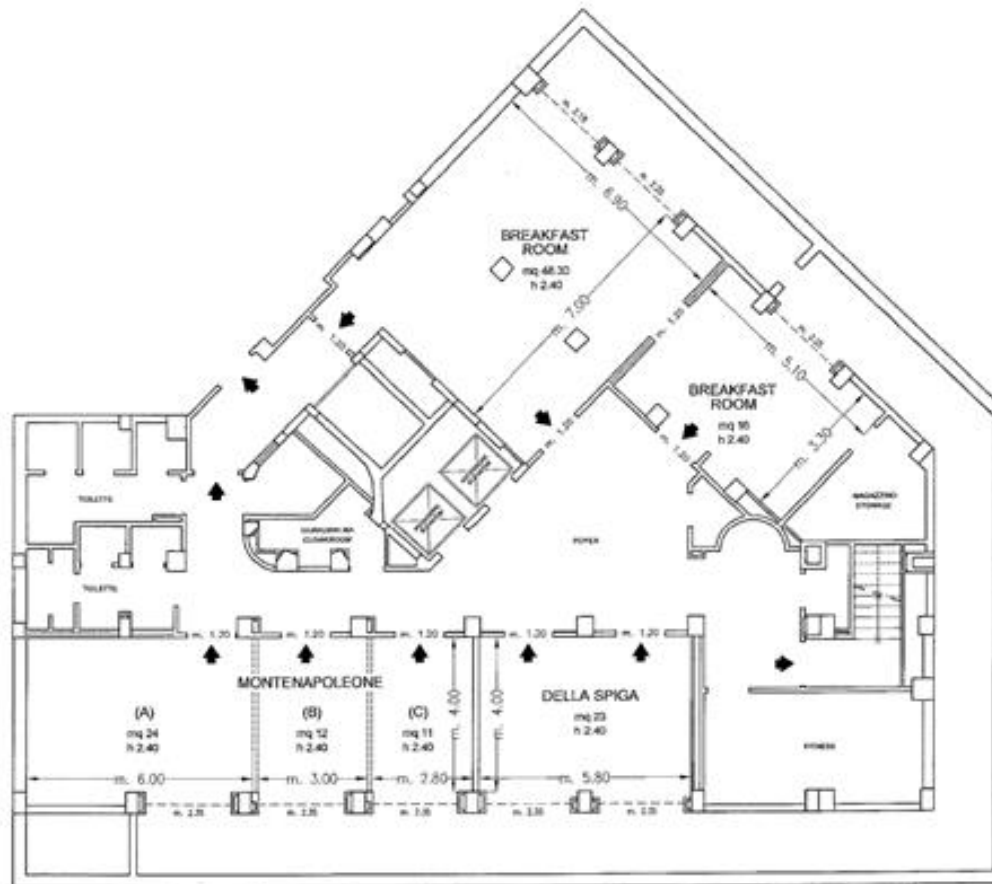
**Meeting rooms: 4**  
**Capacity (theatre style): 50 max**

The hotel's 4 meeting rooms, all featuring hi-tech equipment, can host up to 50 people, and a team of professionals is available to support clients to find the perfect solution.



# Anderson

MILANO



Piano -1 / Basement

- ◆ Uscite di sicurezza / Emergency Exits
- - - - Finestre / Windows
- ..... Paredi mobili / Modular Walls
- Colonne / Columns

# Anderson

MILANO

Meeting rooms	Area mq / ft.	L x W mt. / ft.	Height mt. / ft.	Theatre	Class room	Conference table/ U-shape	Cabaret style^	Cocktail reception	Banquet
Montenapoleone (A)	24 258,24	6,00x4,00 19,68x13,12	2,4 7,87	15	-	8 - 12	-	-	-
Montenapoleone (B)	12 129,12	3,00x4,00 9,84x13,12	2,4 7,87	-	-	8	-	-	-
Montenapoleone (C)	11 118,36	2,80x4,00 9,19x13,12	2,4 7,87	-	-	8	-	-	-
(A+B)	36,5 392,74	9,00x4,00 29,53x13,12	2,4 7,87	35	16	15 - 20	-	-	-
(B+C)	23,5 252,86	5,80x4,00 19,03x13,12	2,4 7,87	15	-	8 - 12	-	-	-
(A+B+C)	50 516,48	11,80x4,00 38,71x13,12	2,4 7,87	50	24	24 - 26	-	-	-
Della Spiga	23 247,48	5,80x4,00 19,03x13,12	2,4 7,87	15	-	8 - 12	-	-	-
Black Bar & Restaurant°	48 516,48	6,90x7,00 22,64x22,97	2,4 7,87	-	-	-	-	50	34
Breakfast Room	64,3 691,87	12,00x7,00 39,37x22,97	2,4 7,87	-	-	-	-	-	50

° Daylight

^ Cabaret style Sizes tables diameter 150 cm