



STARHOTELS®  
PREMIUM

President  
GENOVA

# President

GENOVA

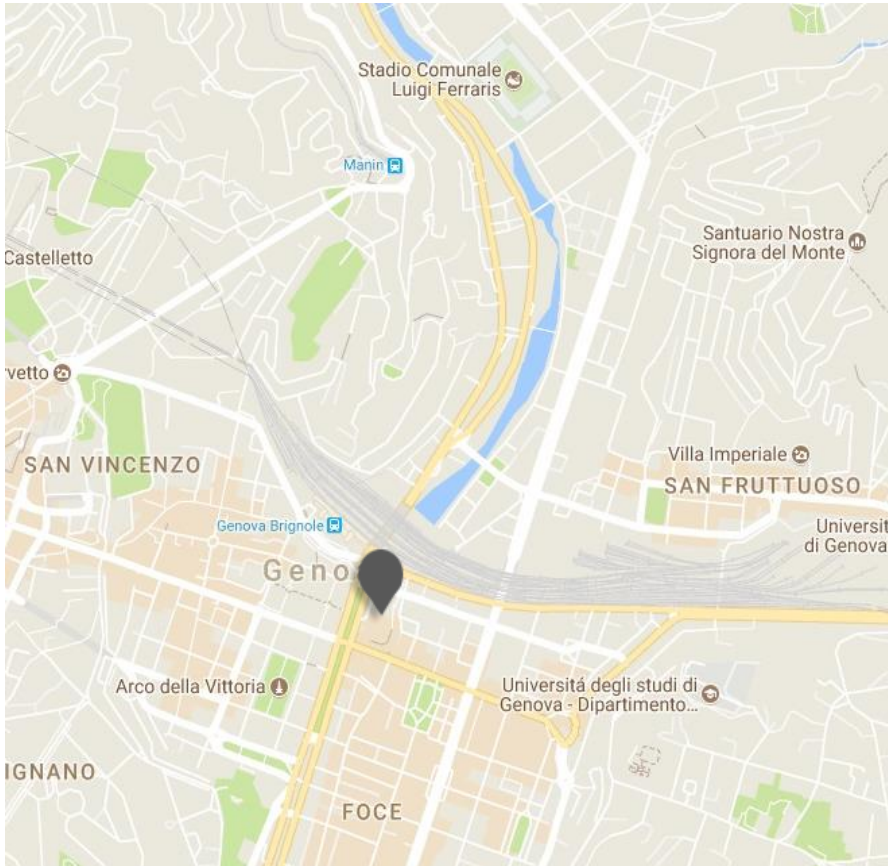


## *Contemporary chic, historic charm*

Located in the modern Corte Lambruschini management centre, in the heart of Genoa, and opposite to the Brignole railway station, the refined elegance of the Starhotels President reflects Genoa's intriguing dual character as a contemporary urban hub and a city shaped by its long, eventful history. All of the 188 rooms and suites offer guests every modern comfort, spacious interiors and chic, refined décor. The large windows provide a magnificent view over the city. The La Corte restaurant delights diners with dishes inspired by the culinary traditions of Liguria.

# President

GENOVA



## Location

In the modern management centre of Corte Lambruschini in the heart of Genoa, opposite to the Brignole railway station and within easy reach of the historic centre

## Distances

**Railway station:** Km 0,2

**Highway:** Km 4

**Fairgrounds:** Km 1

**Airport:** Cristoforo Colombo Km 11

Corte Lambruschini, 4 - 16129 Genova - ITALY  
T +39 010 57271 F +39 010 5531820  
[president.ge@starhotels.it](mailto:president.ge@starhotels.it)  
[starhotels.com](http://starhotels.com)

# President

GENOVA

## Restaurant & Bar

The elegant, refined La Corte restaurant delights guests with a wonderful selection of Ligurian and international dishes, inspired by culinary traditions from Liguria. The La Corte bar is the ideal place for an excellent coffee, a light lunch or a cocktail in an intimate, welcoming atmosphere.



# President

GENOVA



## 188 Rooms

Classic 101  
Deluxe 50  
Deluxe View 34  
Junior suite 1  
Suite 2

The 188 spacious rooms and suites boast every modern comfort and an elegant, contemporary style, with natural colours that create a chic, refined atmosphere. The large windows offer a magnificent view of the city.



# President

GENOVA



## Meetings & Events

**Meeting rooms: 7**

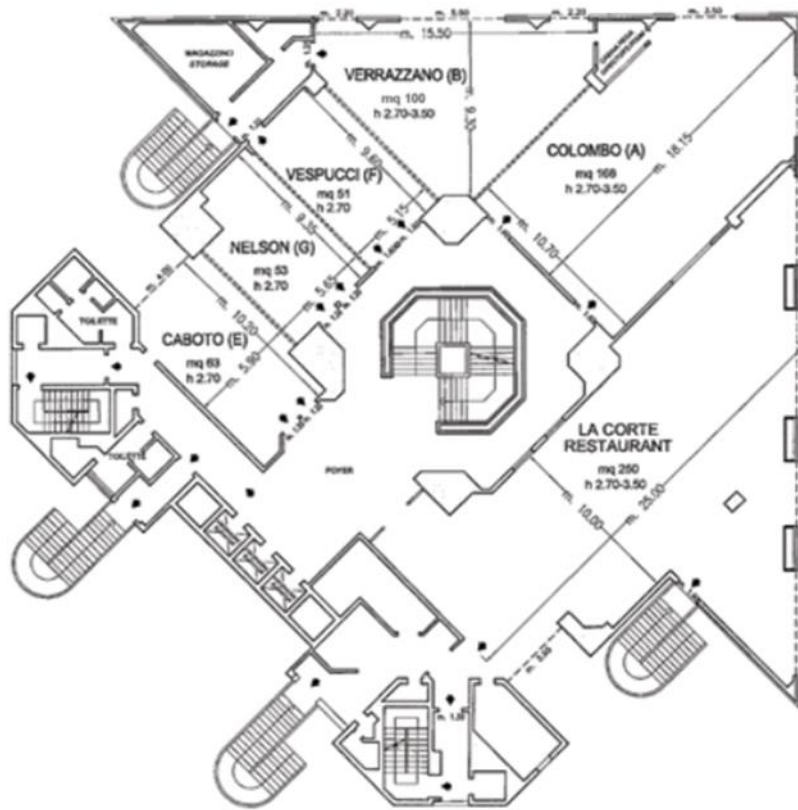
**Capacity (theatre style): 450 max**

The hotel offers 7 versatile meeting rooms that can cater for up to 450 people. All the rooms are equipped with hi-tech conference facilities, and guests will also enjoy the support of a team of professionals.

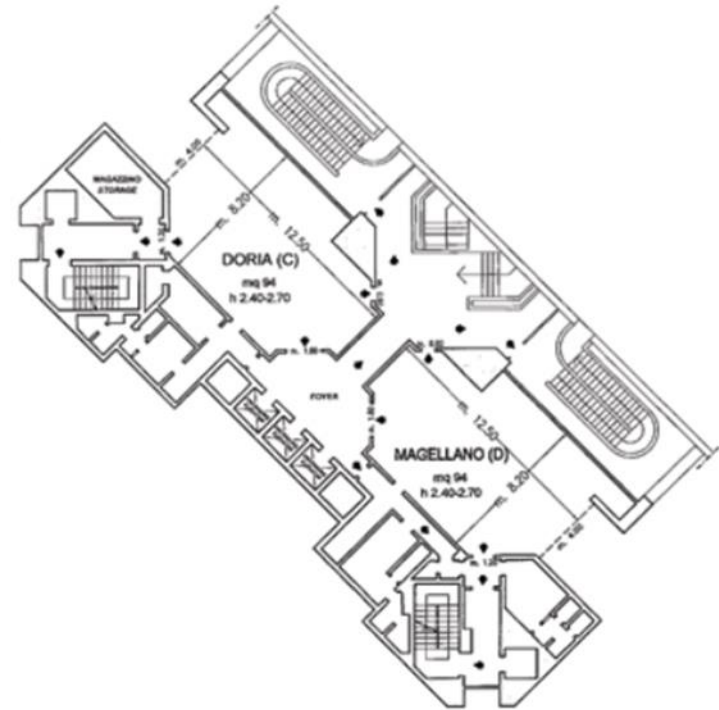


# President

GENOVA



Piano Primo / First Floor



Piano Secondo / Second Floor

- ◆ Uscite di sicurezza / Emergency Exits
- Finestre / Windows
- ▬▬▬▬▬▬▬ Pareti mobili / Modular Walls
- Colonne / Columns

# President

GENOVA

Meeting rooms	Area mq / ft.	L x W mt. / ft.	Height mt. / ft.	Theatre	Class room	Conference table/ U-shape	Cabaret style^	Cocktail reception	Banquet
Colombo (A)°	168 1807,68	18,15x10,70 59,55x35,10	2,70-3,50 8,86-11,48	200	100	60	-	200	100
Verrazzano (B)*°	100 1076,39	9,30x15,50 30,51x50,85	2,70-3,50 8,86-11,48	70	10	15	25	60	40
Doria (C)°	94 1011,44	12,50x8,20 41,01x26,90	2,40-2,70 7,87-8,86	80	40	40	50	80	60
Magellano (D)°	94 1011,44	12,50x8,20 41,01x26,90	2,40-2,70 7,87-8,86	80	40	40	50	80	60
Caboto (E)°	63 677,88	10,20x5,90 33,46x19,36	2,7 8,86	60	25	25	40	50	40
Vespucci (F)	51 548,76	9,60x5,15 31,50x16,90	2,7 8,86	50	20	20	-	40	30
Nelson (G)	53 570,28	9,35x5,65 30,68x18,54	2,7 8,86	50	20	20	-	40	30
(A+B)°	268 2883,68	**	2,70-3,50 8,86-11,48	270	140	65	70	300	200
(B+F)°	150 1614	**	2,70-3,50 8,86-11,48	130	80	30	60	150	90
(E+G)°	116 1248,16	**	2,7 8,86	100	50	-	60	90	80
(F+G)°	104 1119,04	9,35x10,80 30,68x35,43	2,7 8,86	-	40	40	40	80	70
(E+F+G)°	167 1796,92	**	2,7 8,86	180	60	60	80	130	90
(B+E+F+G)°	267 2872,92	**	2,70-3,50 8,86-11,48	300	150	80	100	250	200
(A+B+E+F+G)°	435 4680,6	**	2,70-3,50 8,86-11,48	450	-	-	-	600	-
N.4 Studio Junior Suite°	32 344,32	8,00x4,00 26,25x13,12	2,7 8,86	-	-	10	-	-	-
La Corte Restaurant°	250 2690	25,00x10,00 82,02x32,81	2,70-3,50 8,86-11,48	-	-	-	-	300	150

\* To be used only in conjunction with the other modular meeting rooms

\*\* Please refer to the sizes of each modular meeting room

^ Diameter tables cm 180, up to 6 pax each