

Av. Roma, 22 · E-08015 · Eixample · Barcelona · Spain
 T +34 93 226 55 94
h10.itaca@h10hotels.com
www.hotelh10itaca.com

Information and bookings:
 T +34 900 444 466
reservas@h10hotels.com
www.h10hotels.com

Setting

The **H10 Itaca** is located in the heart of Barcelona, in the iconic Eixample district. A privileged location, close to strategic reference points of the city such as Sants train station (AVE high-speed trains), Plaça Espanya and the trade fair complex.

- 200 m from Sants train station (AVE/Renfe trains) and metro station (Lines 3 and 5)
- 950 m from Plaça Espanya
- 1.2 km from Fira Barcelona - Montjuïc trade fair complex
- 1.5 km from the Montjuïc Magic Fountain
- 1.6 km from Caixa Forum
- 1.7 km from the Mies van der Rohe Foundation
- 1.9 km from the Palau Nacional
- 2.1 km from Casa Batlló
- 2.1 km from the Camp Nou – F.C. Barcelona stadium
- 2.5 km from the Joan Miró Foundation
- 2.5 km from the Lluís Companys Olympic stadium
- 2.6 km from Plaça de Catalunya
- 3.7 km from the Sagrada Família
- 3.8 km from the Fira Barcelona Gran Via trade fair complex
- 5 km from Barceloneta beach
- 7 km from the port of Barcelona (cruises)
- 12 km from Barcelona-El Prat airport

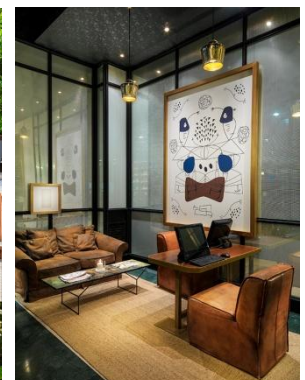
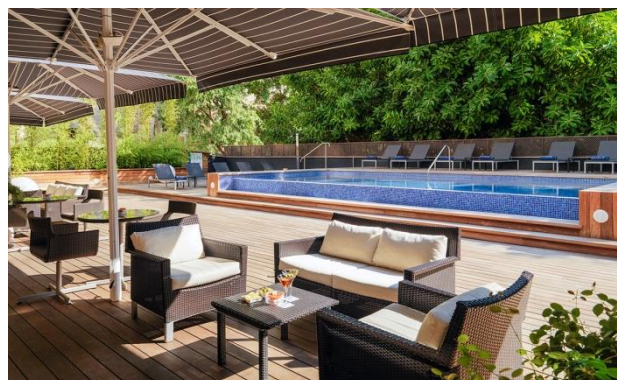


Coordinates: 41° 23' 2.86" N / 2° 9' 38.63" E

Description

The **H10 Itaca** is located in the Eixample district, very close to the trade fair complex, Plaça Espanya, and a stone's throw from Sants train station (AVE high-speed trains). With a warm and elegant interior, the hotel has recently renovated some of its facilities including its rooms and the Bamboo Restaurant. The hotel also has three meeting rooms and the El Jardí Terrace with plunge pool and sun lounge area.

- 97 rooms**
- Complimentary Wi-Fi** throughout the hotel
- Business Corner**
- Bamboo Restaurant** (RENOVATED!)
- El Jardí Terrace** features a plunge pool, sun lounge area and bar service
- Sauna and gym**
- 3 meeting rooms** (RENOVATED!)
- Public car park (unattended) (\$)**



Rooms

The **H10 Itaca** offers comfortable rooms equipped with all the amenities you might need for a comfortable stay:

Flat-screen TV with international channels

Pillow menu

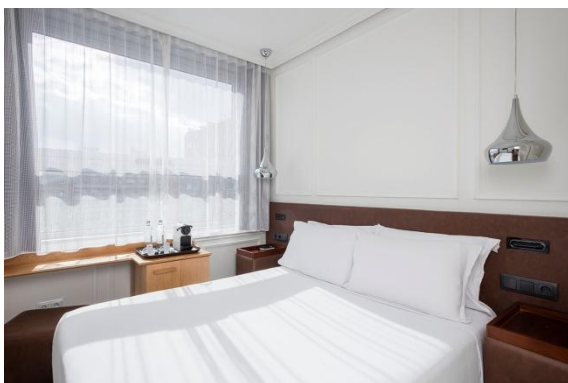
Minibar (\$ according to consumption)

Kettle (on request and subject to availability)

In-room safe

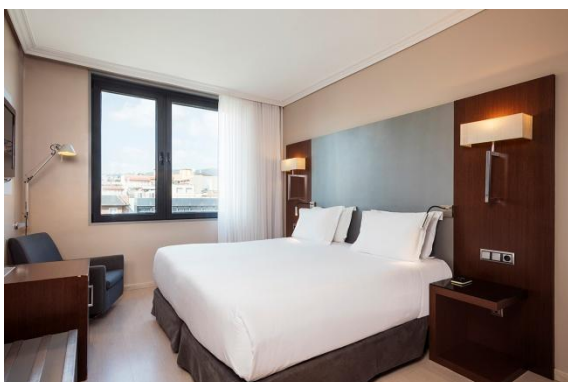
Climate control system

Full bathroom with bathtub, professional hairdryer and magnifying mirror



BASIC ROOM

Basic Rooms: bright, small rooms whose bedrooms have been extensively renovated with an elegant and contemporary interior design. They have a Queen Size bed and views of the El Jardí Terrace.

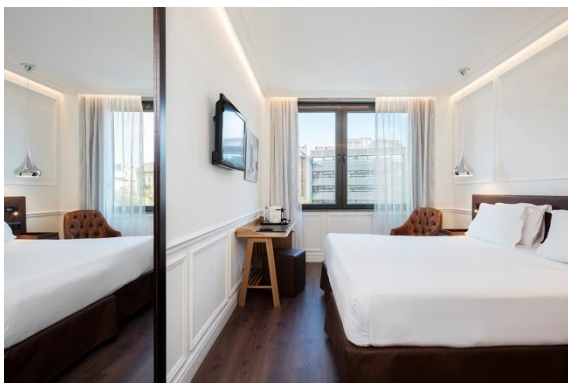


SUPERIOR ROOM

Superior Rooms: very bright rooms located on the upper floors of the hotel. Some changes have been made recently to their décor, making them more welcoming. They have a Queen Size bed or two single beds, armchair and views of the El Jardí Terrace or the city. They are also equipped with:

Kettle

Iron and ironing board

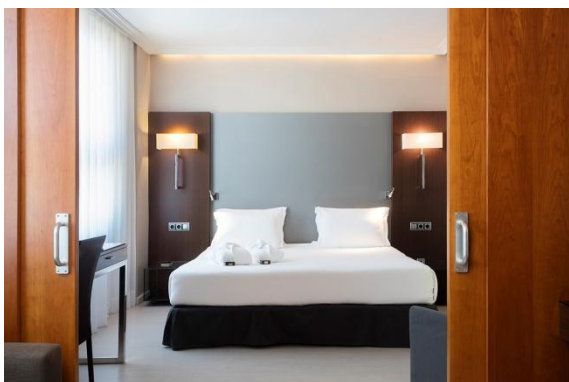


DELUXE ROOM

Deluxe Rooms: bright, spacious rooms whose bedrooms have been completely renovated with an elegant and contemporary design. They have a Queen Size bed or two single beds, armchair and views of the El Jardí Terrace or the city. They also offer:

Nespresso machine

Iron and ironing board



SUITE

Suite: spacious room with a bedroom area, separate living room and dressing room. The Suite also has:

- King Size bed (2 x 2 m)
- Nespresso machine
- iHome
- Bathrobe and slippers
- Large bathroom with separate bathtub and shower

Note: the décor, size and views of the rooms may vary depending on the room allocated.

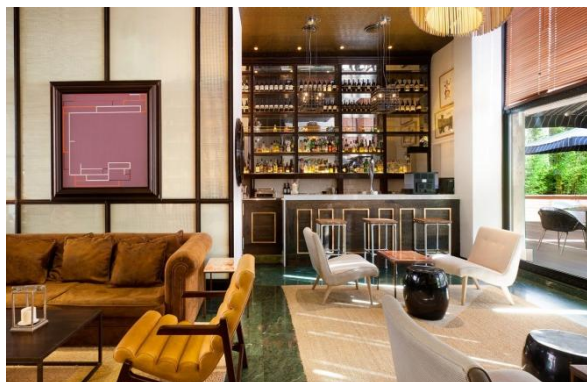
Restaurants and bars



BAMBOO

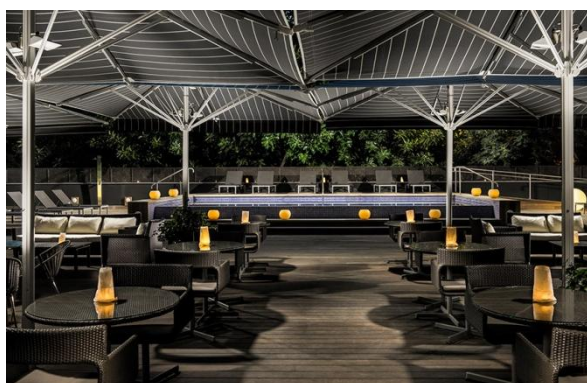
Bamboo (RENOVATED!): restaurant located on the first floor, with large windows and street views. There is a large buffet for breakfast and an à la carte service for dinner.

During the summer months dinner service is exclusively served on the El Jardí Terrace.



LOBBY BAR

Lobby Bar: ideal for relaxing next to the El Jardí Terrace while enjoying a drink or some snacks.



EL JARDÍ

El Jardí: a large and pleasant 700 m² terrace with plunge pool and sun lounge area. A perfect space for enjoying a cocktail or refreshment at any time of the day.



The **H10 Itaca** has three renovated meeting rooms with natural light which are ideal for all types of events. The Tàpies and Miró rooms can be partitioned and when they merge with the Bamboo restaurant they can accommodate 150 people. The hotel also offers the exclusive 700 m² El Jardí Terrace, a perfect space for drinks receptions for up to 120 people.

MEETINGS & EVENTS
H10 HOTELS

Spaces for events	m ²	Height	CAPACITY						
			Cocktail	Theatre	Classroom	U shape	Boardroom	Banquet	Cabaret
MIRÓ	43	2.50 m	20	22	22	16	18	26	20
PICASSO	58	2.50 m	50	50	35	22	22	36	30
TÀPIES	45	2.50 m	43	40	28	25	30	26	20
DALÍ (TÀPIES & MIRÓ)	85	2.50 m	70	80	50	40	50	50	40
BAMBOO RESTAURANT	104	2.50 m	75	-	-	-	22	50	80
BAMBOO RESTAURANT & TÀPIES	104	2.50 m	120	-	-	-	36	90	-
BAMBOO REST. & TÀPIES & MIRÓ	149	2.50 m	150	-	-	-	-	120	-
EL JARDÍ TERRACE	700	Exterior	120	-	-	-	-	-	-

* Maximum capacity (optimal) recommended for these rooms by event type.



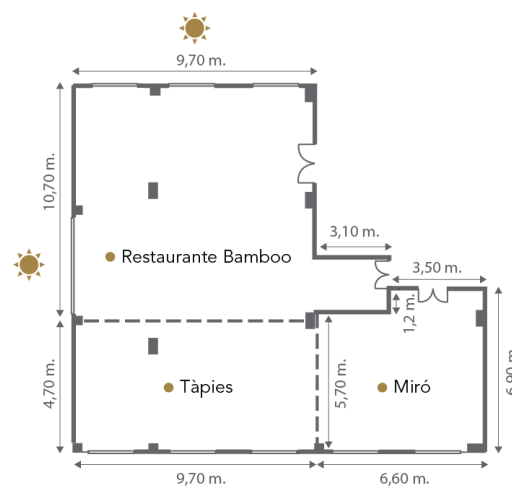
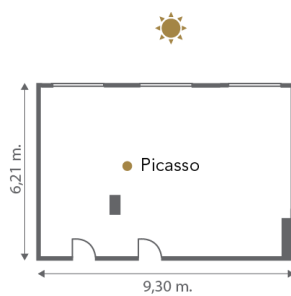
DALÍ – CLASSROOM LAYOUT



PICASSO – BOARDROOM LAYOUT



BAMBOO – BANQUET LAYOUT



Luz Natural · Natural Light

● Dalí (Tàpies & Miró)

GDS

SABRE: WV 60078

APOLLO/GALILEO: WV 41248

WORLDSPAN: WV 43562

AMADEUS: WV BCN31A

Quality certificates



Management System
ISO 9001:2008
www.tuv.com
ID 9105066392



Awards

TRIPADVISOR	Certificate of Excellence – 2017, 2015, 2014, 2013, 2012, 2011
SPANISH HOTEL AWARDS - BOOKED.NET	Highly Recommended Barcelona – 2015
GRAN HOTEL TURISMO	Best Hotel Chain 2014 at the 10 th Hotel Initiative Awards – 2014
HOLIDAYCHECK	Quality Selection – 2013
ZOOVER	Recommended Award – 2013
TRAVEL REPUBLIC	Customer Recommendation Awards – 2011
H10 HOTELS	1 st Prize for Excellence – 2007