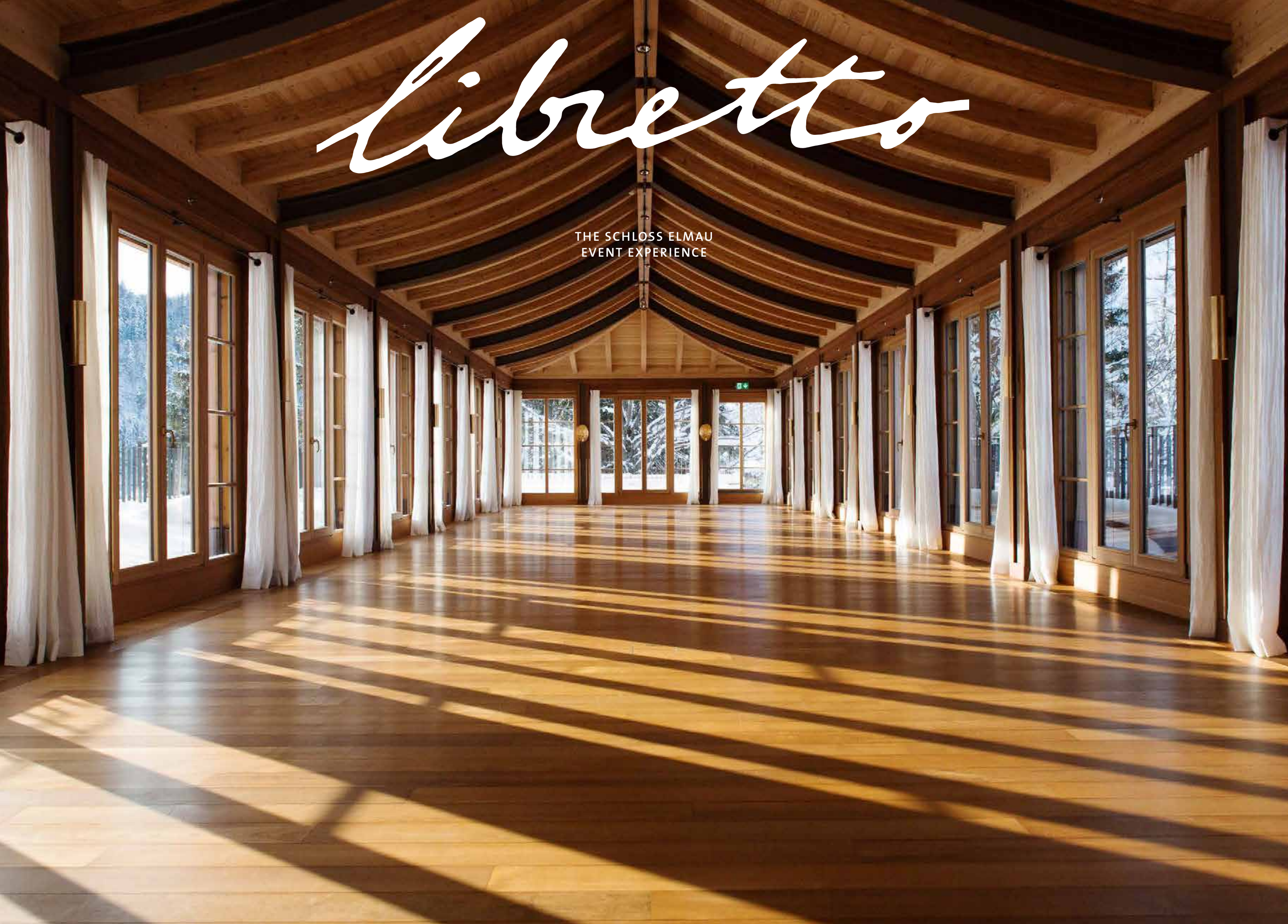


Libretto

THE SCHLOSS ELMAU
EVENT EXPERIENCE





WELCOME TO THE SCHLOSS ELMAU EVENT EXPERIENCE

100km south of Munich. 1000m above sea level.
In a pristine valley of the Bavarian Alps.
The spirit of the mountains. The deafening sound of silence.
The rushing of crystal-clear mountain streams.
A feeling of boundless freedom and timelessness.

Heavenly peace in three spas for adults.
Serenity & exuberance in three spas for families.
Daily Yoga without Dogma & Sports Unlimited.
Edutainment & Adventure for Kids & Teens.
Cooking for gourmets & cosmopolitans.
Food for thought in a bookstore & several libraries.
And 100 years of concerts & discussions
with great artists and personalities of our time.

Unsurpassed opportunities
for exclusive parties, events & meetings.

DIETMAR MUELLER-ELMAU CEO & OWNER
NIKOLAI BLOYD GENERAL MANAGER
CHRISTIAN MAGEWSKI HOTEL DIRECTOR
MARIO CORTI CULINARY DIRECTOR
SILKE ZIMMERMANN ARTISTIC DIRECTOR
DR. IMKE KÖNIG SPA DIRECTOR
JOHANNES MIKENDA YOGA, SPORTS & SPA DIRECTOR
BARBARA SCHELER DIRECTOR OF ROOMS & SALES
ISABEL GROSSE SALES & BUSINESS DEVELOPMENT







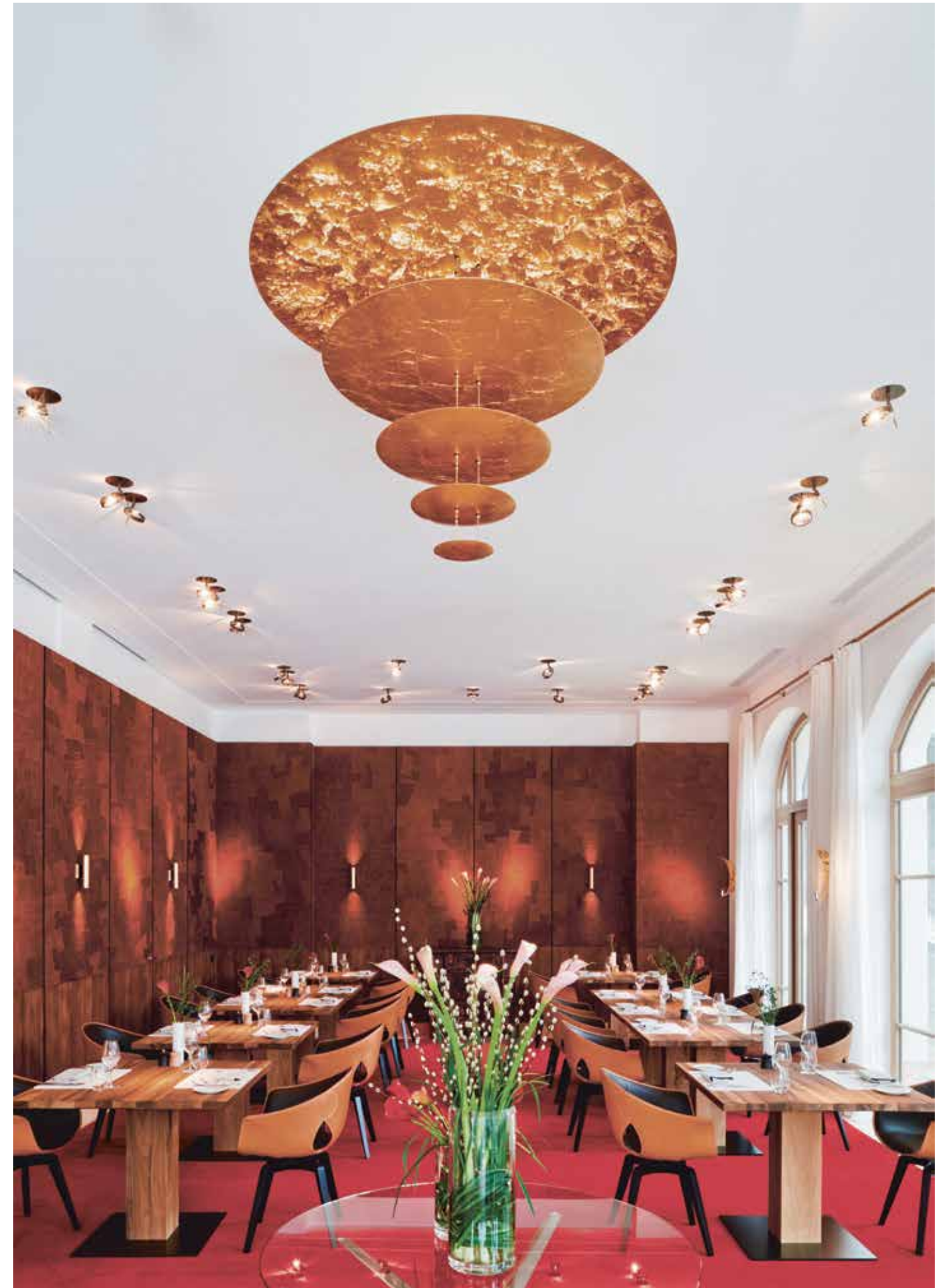








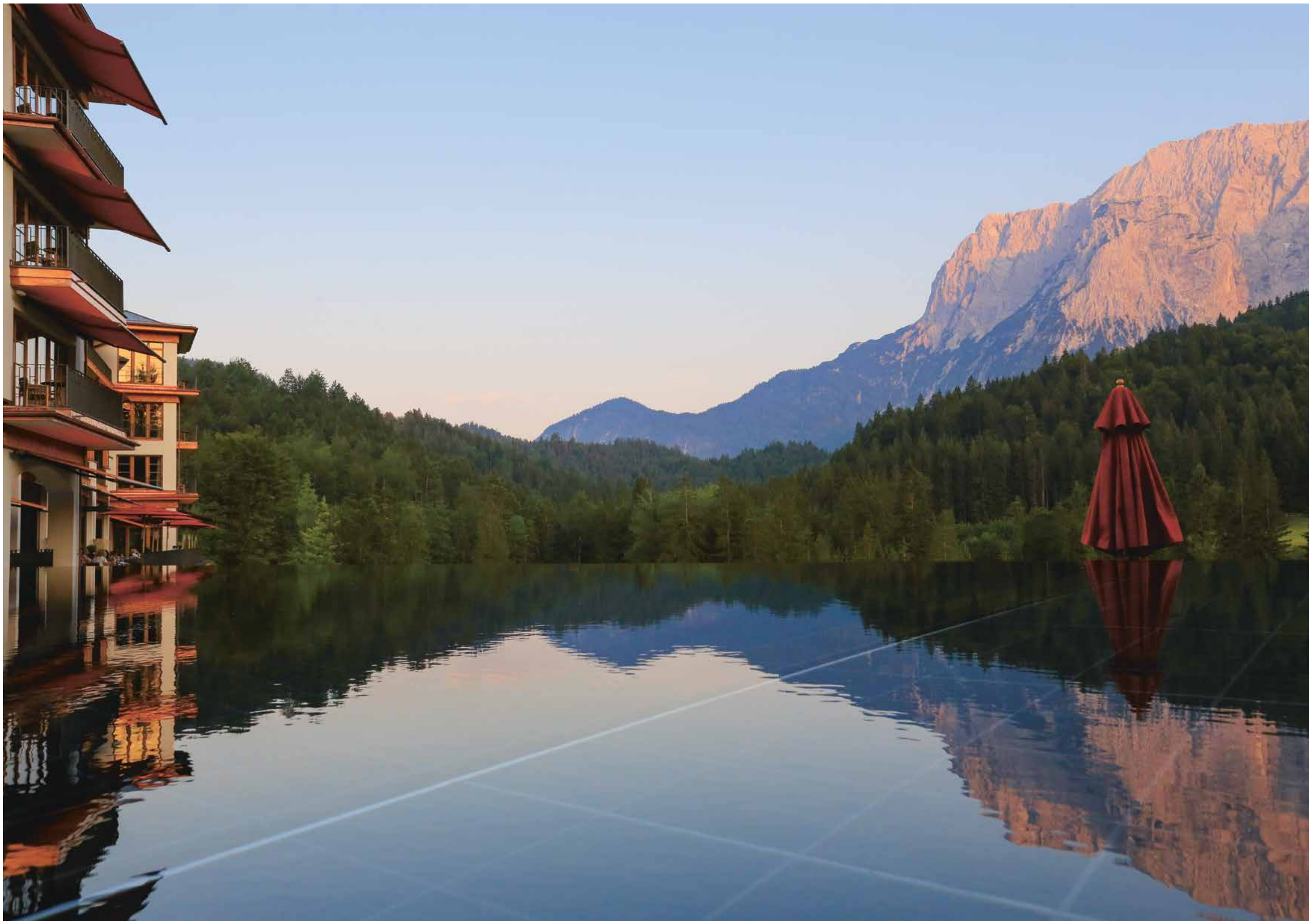
















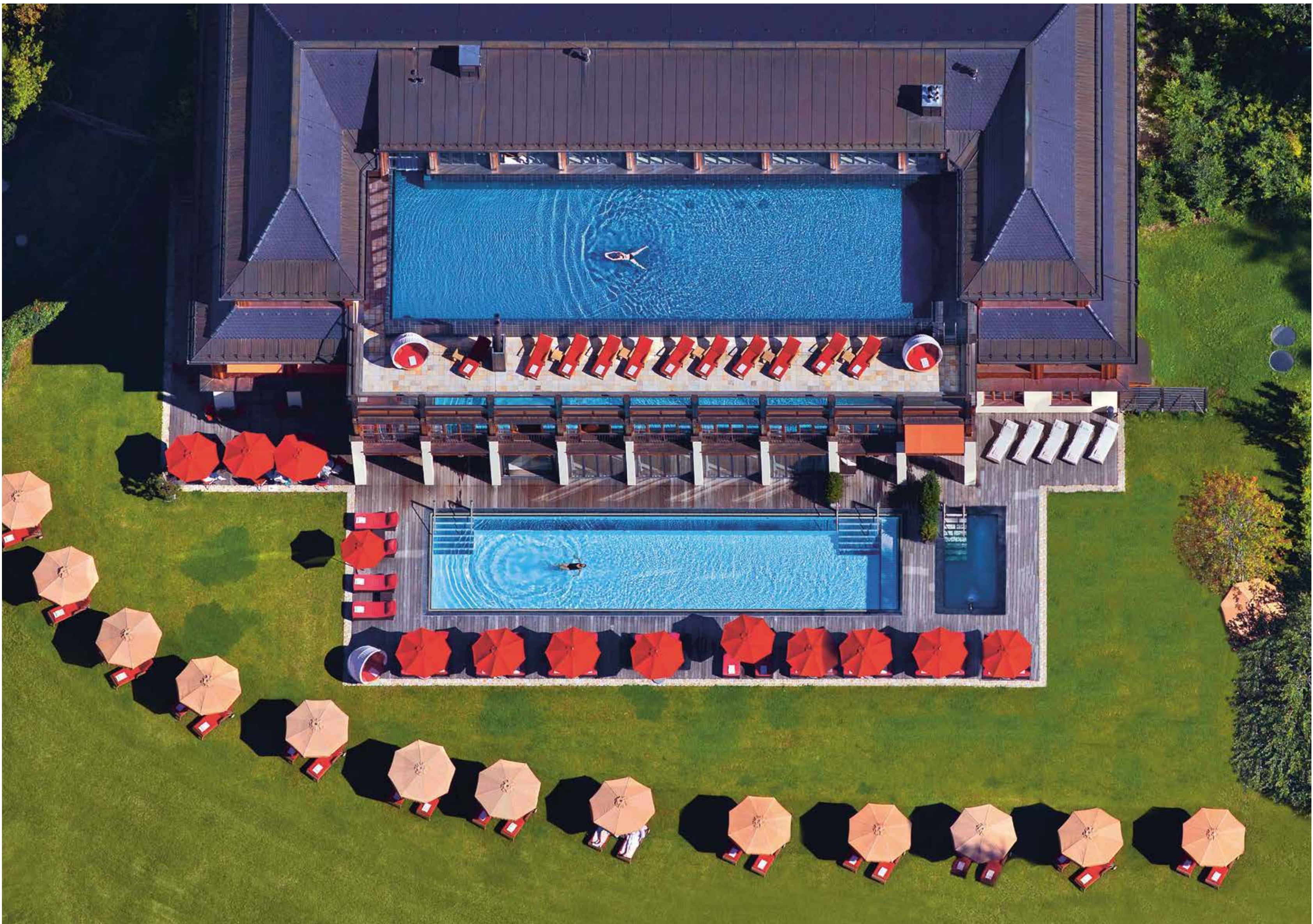
























**SPORTS & ADVENTURE PROGRAM
FOR KIDS & TEENS FROM AGES 6 – 15**

Archery. Trampolining.
Kayaking on Walchensee lake. Play water polo,
soccer, bocce, foosball, table tennis,
chess or billiards. Mountaineering & other peak experiences
Cross ravines and gorges.
Geocaching & e-mountain bike.
Chaos Rally. Archery by torchlight.
BBQ by the campfire & make new friends.
Debating Club – Find answers to burning questions.

SUMMER SPORT

Hike to King Ludwig II's royal lodge at Schachen or to famous Partnachklamm Gorge, to rustic Elmauer Alm, and many another worthwhile destinations in the immediate vicinity of the hotel. Swim in one of our four outdoor pools, the crystal clear waters of Ferchensee lake, or in Ferchenbach stream. Mountain guide Hermann Glatz will take you on a mountain tour, usually on Tuesdays and Thursdays, to one of more than 70 nearby peaks in the Wetterstein and Karwendel mountains. Go on a daily jog to and around Ferchensee lake – or Nordic Walking to Elmauer Alm. Ride one of our state-of-the-art electric mountain bikes to the Schachen, or with a guide to spectacular goals that can only be reached on e-bike. Learn and play golf on three courses in Oberau, Wallgau and Seefeld. Play tennis with or without a coach on three clay courts in the Nature Spa. Play bocce on two courts in the Nature spa. Go riding at the Schmalensee-Gestüt. Archery on the hotel grounds. Rowing on Ferchensee lake. Kitesurfing or windsurfing on Walchensee lake. Kayaking on Ferchensee lake or the Loisach. Rafting down the Inn. Canyoning in the Karwendel and Wetterstein mountains.

WINTER SPORT

Swim in one of four large, warm and hot pools. Cross-country skiing or skating on 30 km of perhaps the most beautiful trails in the Alps, for beginners and experts, directly from the Schloss to Elmauer Alm. Hiking on 30 km of cleared trails. Ski on 200 km of groomed slopes between Garmisch and Seefeld, ideal for beginners, as well as back country in Dammkar. Go skiing with a personal instructor or take group skiing lessons. Guided ski safaris to the day's best slopes. Horse riding at the nearby Schmalensee-Gestüt. Sledding from Elmauer Alm. Ice skating or curling on two rinks. Dog sledding. Snowshoeing.





**100 YEARS OF
CONCERTS & TALKS WITH
GREAT ARTISTS OF OUR TIME**

Schloss Elmau offers a culturally and historically significant cultural program that is unique in the world and featuring the most famous artists of our time. Each year, more than 200 concerts from all genres of music: classical, jazz, pop, swing and world music, as well as readings and film screenings, some of them created especially for Schloss Elmau.

As guests, you can participate in the hotel's free comprehensive cultural offerings free of charge. However, we will also very gladly support you in designing an individual musical context for your family or business celebration.







FACT SHEET SCHLOSS ELMAU

LUXURY SPA RETREAT

Opened in 2015.
Asian airiness & cosmopolitan seclusion.
Maximum tranquility and privacy for spa aficionados and traveling aesthetes.
Spectacular hillside location. Breathtaking views of the Wetterstein massif & rushing Ferchenbach stream.
47 spacious suites & junior suites (55-200 SQ M).
3 restaurants with High Thai & World Cuisine.
Library Lounge & Spa with terraces.
Shantigiri Spa, with Adult, Lady and Family Spa, Nature Spa
Fitness Gym & Ultimate Yoga Pavilion.

Residence of the heads of state during the G7 Summit, 2015.

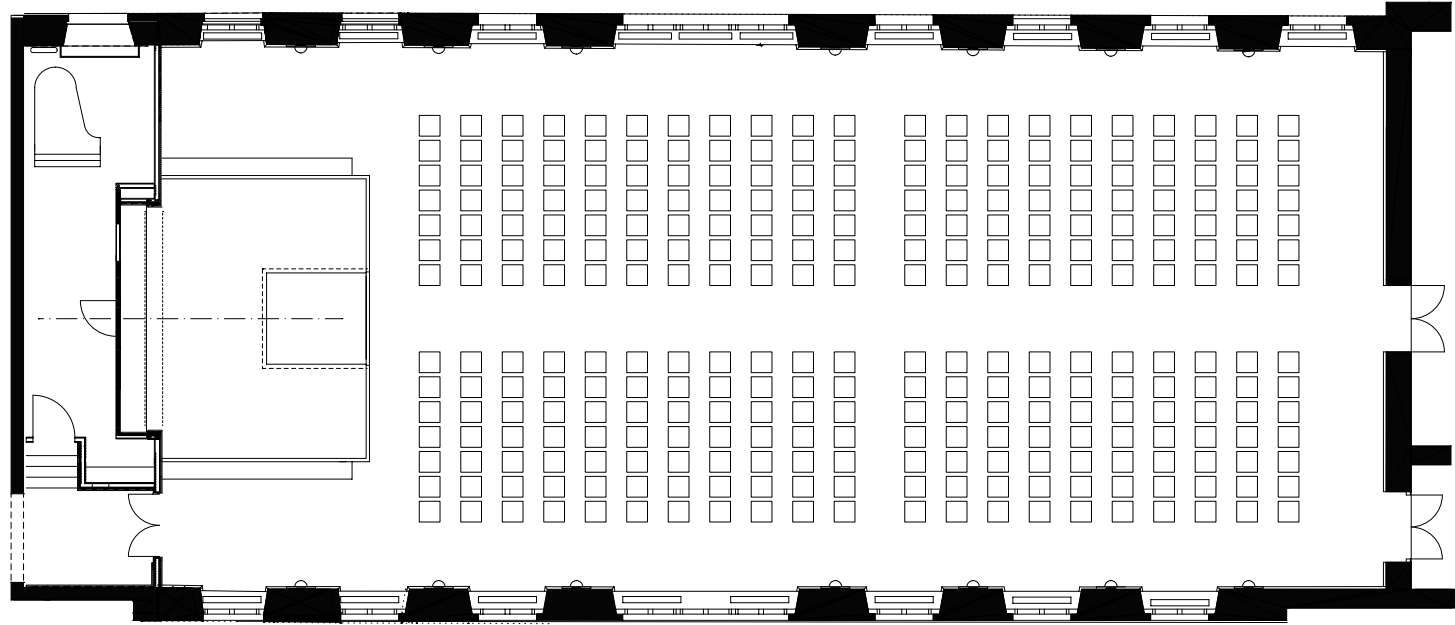


LUXURY SPA & CULTURAL HIDEAWAY

Built between 1914 and 1916. Largely destroyed by fire in 2005.
Rebuilt in new spaciousness in 2007.
An unsurpassed diversity of ways to withdraw or meet interesting people from all over the world.
115 rooms & suites (20-110 sq m). 6 restaurants.
3 lounges and terraces. Bathhouse Spa & Oriental Hammam for adults.
Family Spa & Nature Spa.
Jivamukti Yoga Center. Taijiquan, Qigong, Pilates Studio & Fitness Gym.
Year-round Sports Unlimited in the empowering Alps.
Fashion & Lifestyle Store. Kids Club & Billiard Lounge. Libraries.
Bookstore. Concert Hall.

For larger events,
The Schloss and Retreat
can only be booked exclusively, either individually or
Together.

CONCERT HALL
SCHLOSS



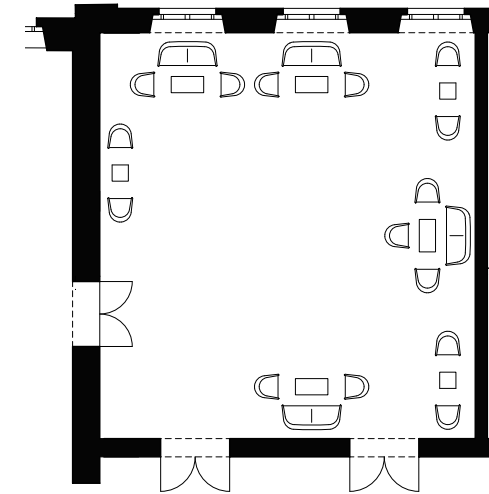
BANQUET 200 PERSONS
THEATER 250 PERSONS
CLASSROOM 120 PERSONS
BLOCK 100 PERSONS
U-SHAPE 80 PERSONS

ROOM SIZE 400 SQ M
LOCATION 1ST FLOOR SCHLOSS





CONCERT HALL FOYER
SCHLOSS

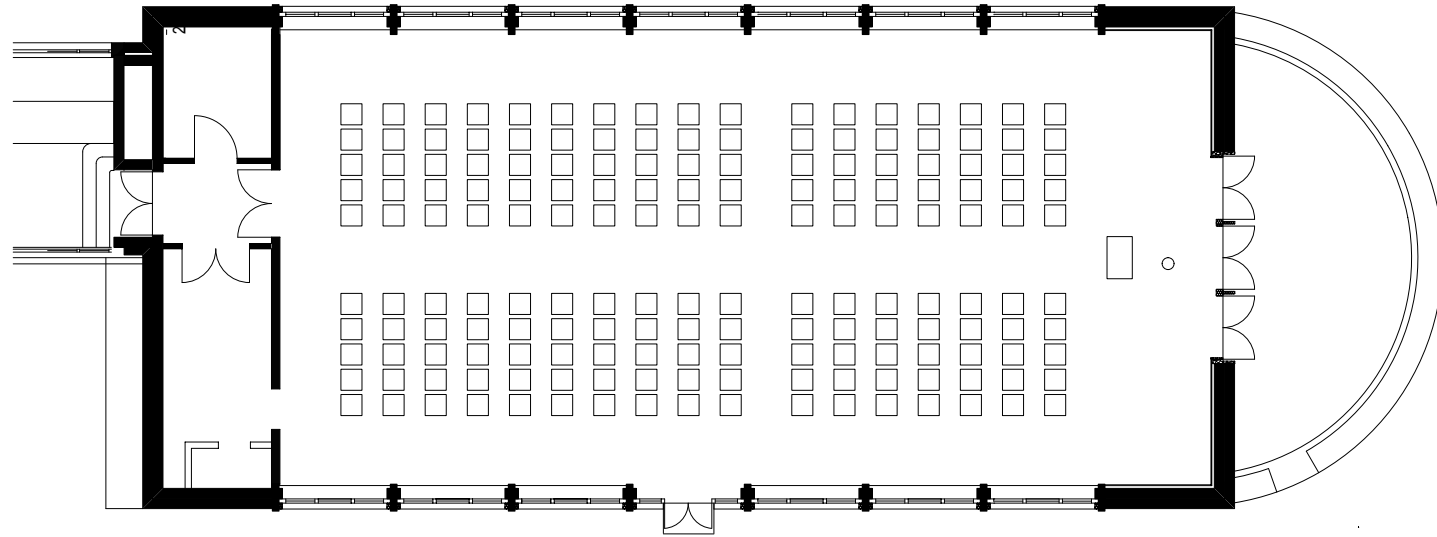


THEATER 30 PERSONS
BLOCK 20 PERSONS
U-SHAPE 20 PERSONS

ROOM SIZE 90 SQ M
LOCATION 1ST FLOOR SCHLOSS



FIDELIO
SCHLOSS

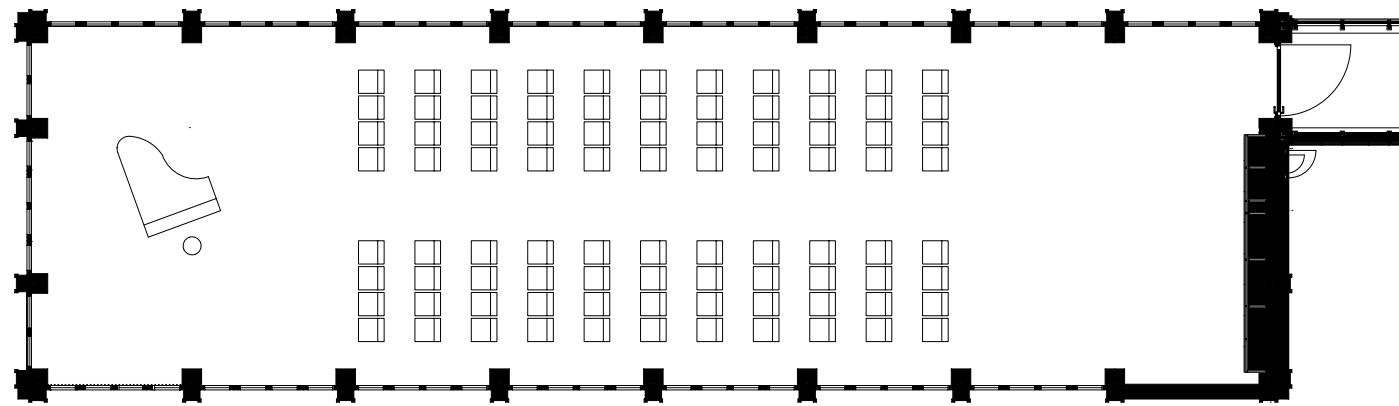


BANQUET 100 PERSONS
THEATER 150 PERSONS
CLASSROOM 80 PERSONS
U-SHAPE 70 PERSONS

ROOM SIZE 200 SQ M
LOCATION GROUND FLOOR SCHLOSS

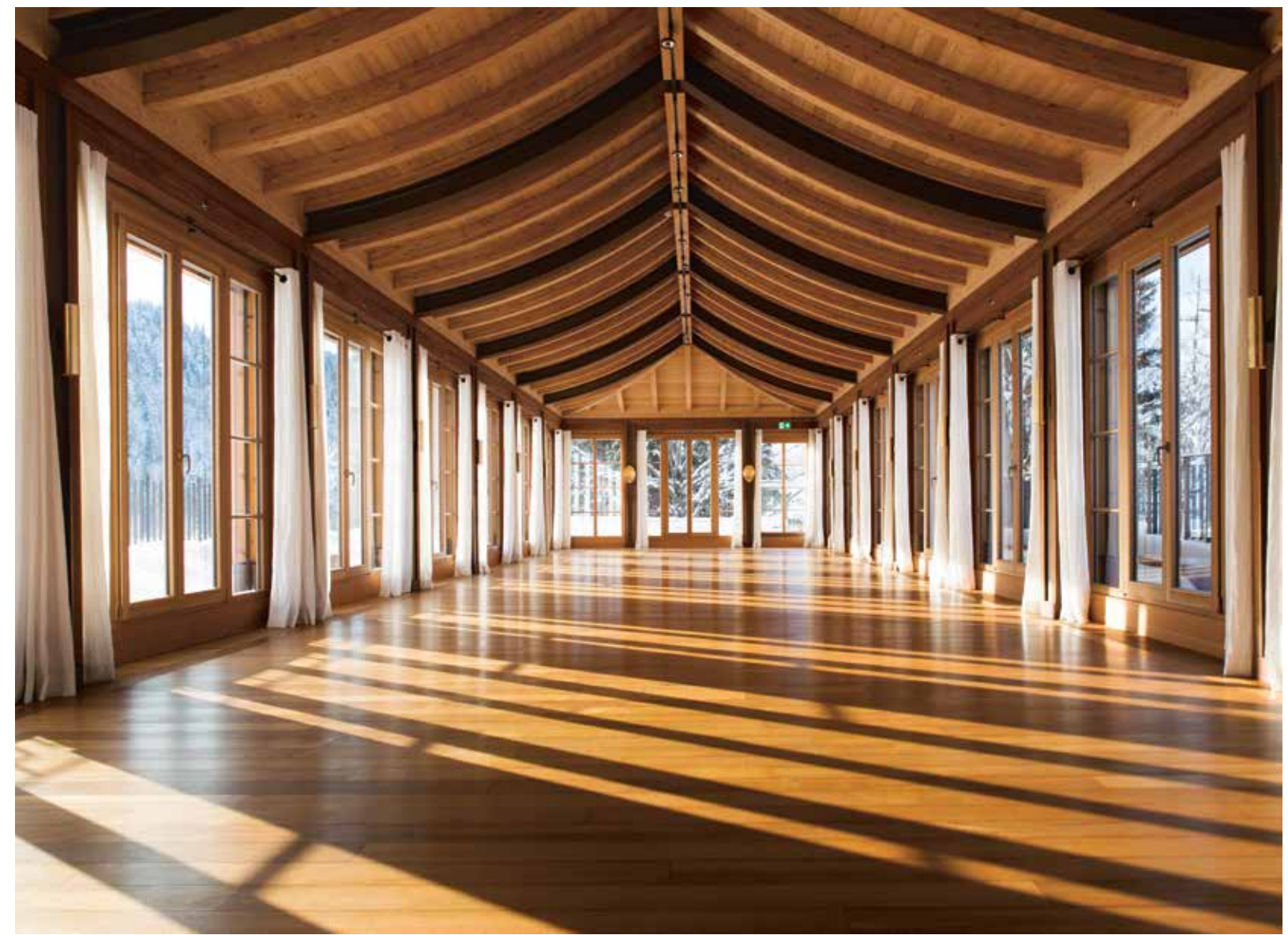


PAVILION
RETREAT



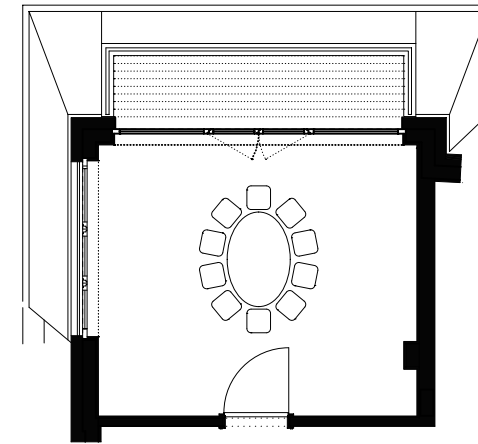
THEATER 120 PERSONS
U-SHAPE 40 PERSONS

ROOM SIZE 163 SQ M
LOCATION 1ST FLOOR RETREAT





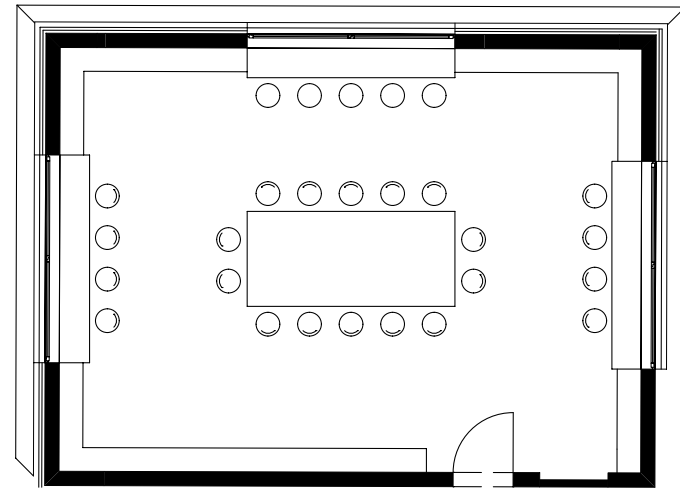
**BOARD ROOM
RETREAT**



BLOCK 8 PERSONS

ROOM SIZE 30 SQ M
LOCATION 1ST FLOOR RETREAT

LIBRARY
SCHLOSS



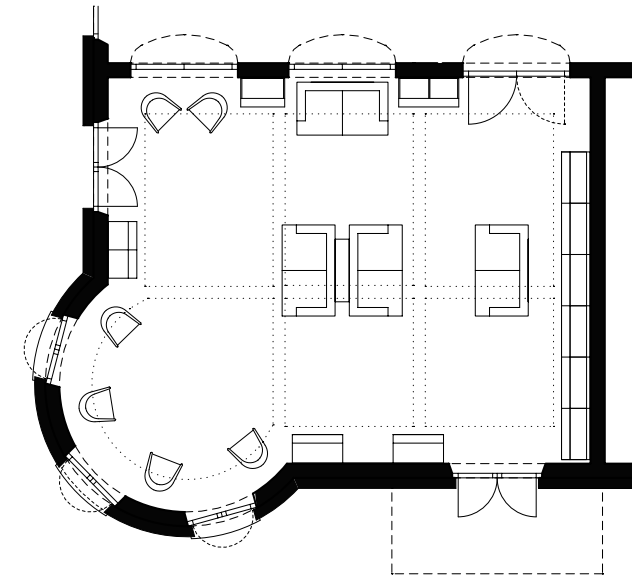
THEATER 40 PERSONS
CLASSROOM 30 PERSONS
BLOCK 20 PERSONS
U-SHAPE 25 PERSONS

ROOM SIZE 70 SQ M
LOCATION 1ST FLOOR
WETTERSTEIN WING





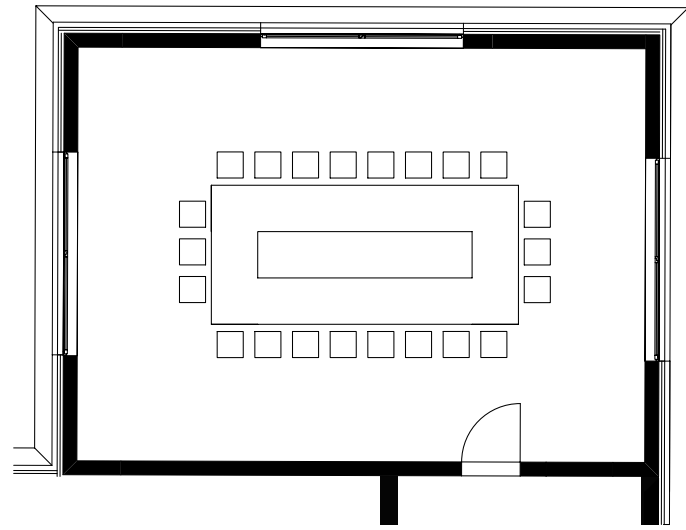
SILENTIUM
SCHLOSS



ROOM SIZE 60 SQ M
LOCATION GROUND FLOOR SCHLOSS



ENZIAN
SCHLOSS



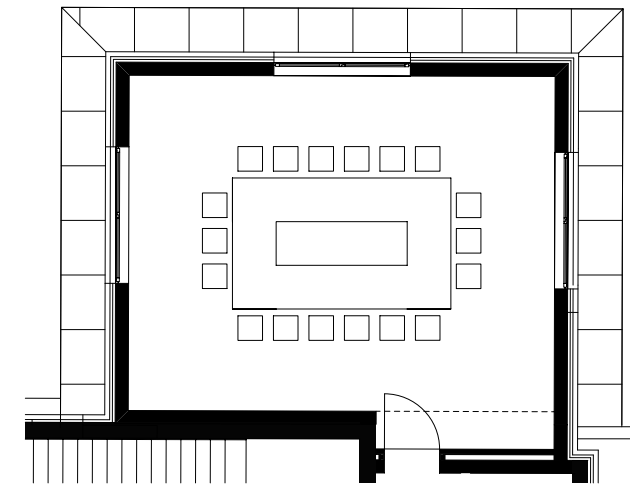
THEATER 40 PERSONS
CLASSROOM 30 PERSONS
BLOCK 20 PERSONS
U-SHAPE 25 PERSONS

ROOM SIZE 70 SQ M
LOCATION GROUND FLOOR
WETTERSTEIN WING





EDELWEISS
SCHLOSS



BLOCK 10 PERSONS
U-SHAPE 15 PERSONS

ROOM SIZE 48 SQ M
LOCATION 2ND FLOOR
WETTERSTEIN WING

CULINARY ART FOR AFFICIONADOS

LUCE D'ORO / SCHLOSS
1 MICHELIN STAR
17 GAULT MILLAU POINTS

FIDELIO / SCHLOSS
CUCINA ITALIANA À LA CARTE
15 GAULT MILLAU POINTS

LA SALLE / SCHLOSS
LIVE COOKING & BUFFETS

WINTERGARTEN LOUNGE / SCHLOSS
BISTRO & TERRACE

KAMINSTÜBERL / SCHLOSS
FONDUE RESTAURANT

ANANADA / SCHLOSS
SPA-RESTAURANT & TERRACE

TUTTO MONDO & SUMMIT / RETREAT
WORLD CUISINE & HIGH THAI

GANESHA SPA LOUNGE / RETREAT

ELMAUER ALM
RUSTIC CABIN WITH OPEN FIREPLACE
PANORAMIC VIEWS FROM ZUGSPITZE TO KARWENDEL

AL CAMINO BAR / SCHLOSS

TEA LOUNGE / SCHLOSS

SILENTIUM LIBRARY / SCHLOSS

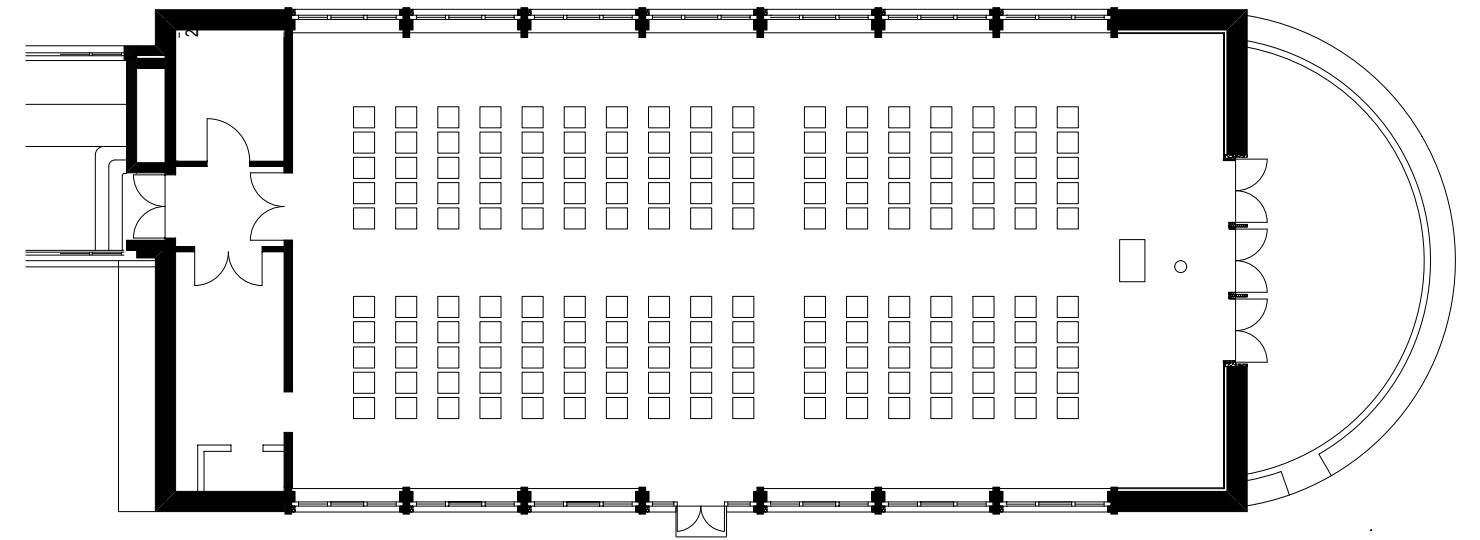
LIBRARY LOUNGE / RETREAT

TERRACE LOUNGE / RETREAT





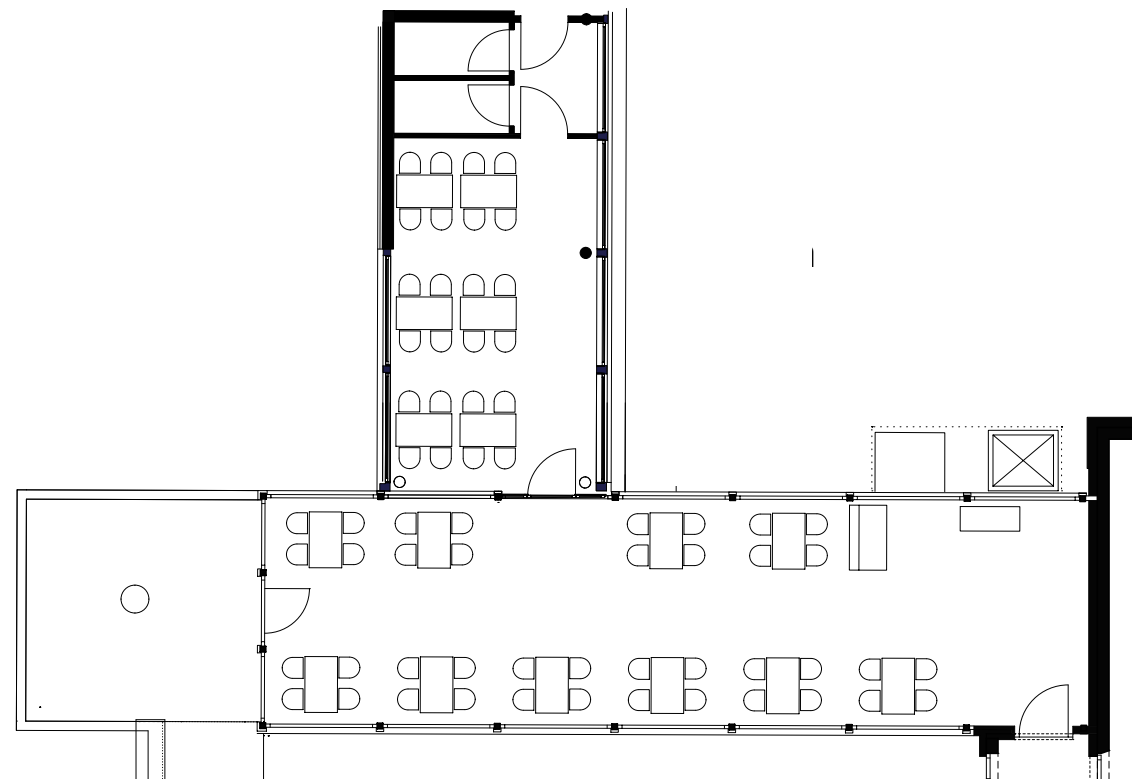
FIDELIO
SCHLOSS



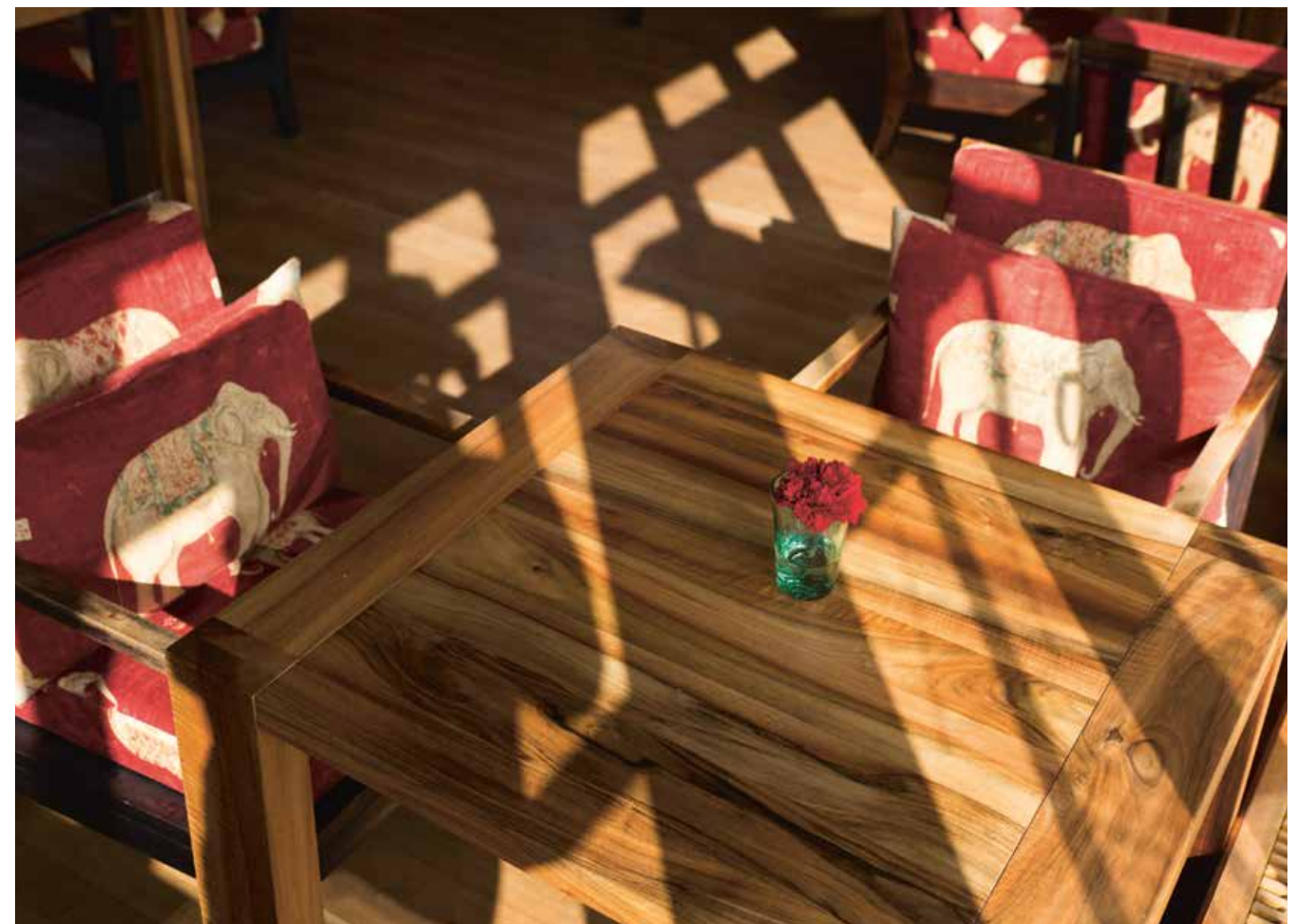
BANQUET 100 PERSONS
THEATER 150 PERSONS
CLASSROOM 80 PERSONS
U-SHAPE 70 PERSONS

ROOM SIZE 200 S QM
LOCATION GROUND FLOOR SCHLOSS

WINTERGARTEN LOUNGE
SCHLOSS

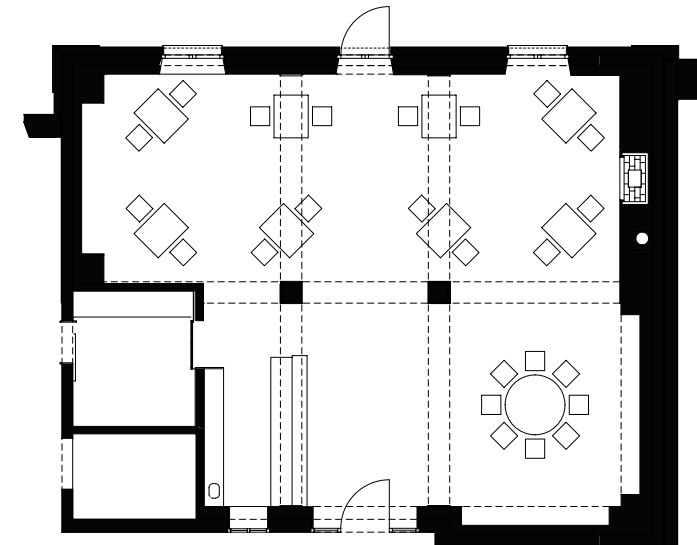


BANQUET 30 PERSONS
ROOM SIZE 120 SQ M
LOCATION GROUND FLOOR SCHLOSS





LUCE D'ORO
SCHLOSS

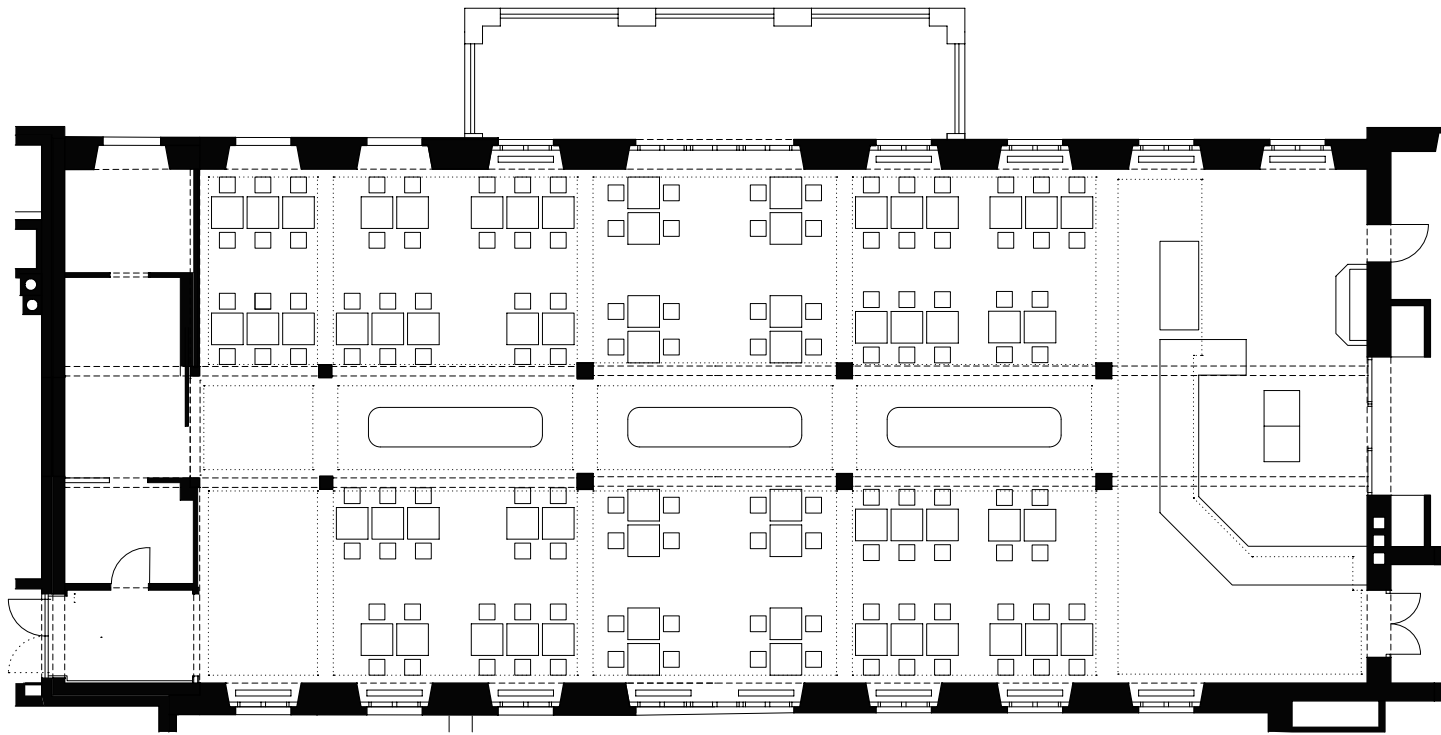


BANQUET 30 PERSONS

ROOM SIZE 115 SQ M
LOCATION CELLAR SCHLOSS



LA SALLE
SCHLOSS

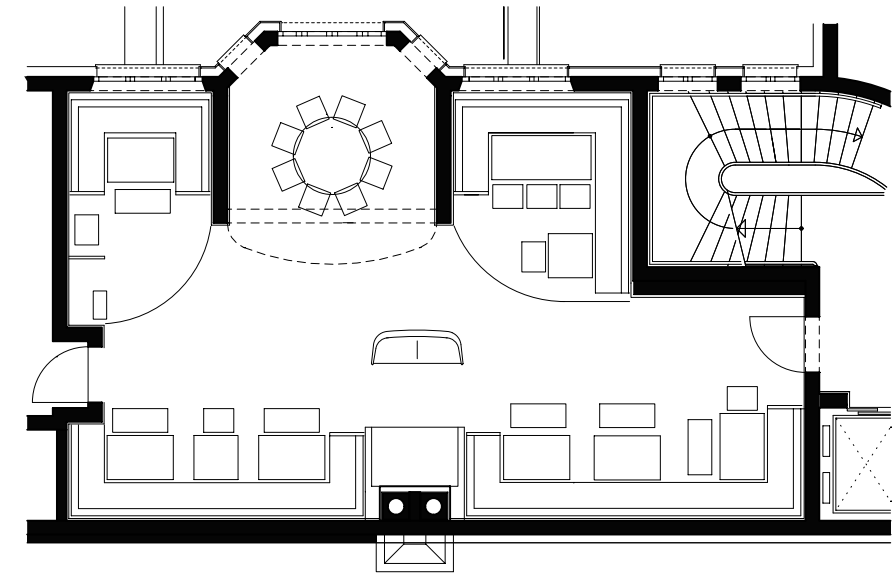


BANQUET 180 PERSONS
ROOM SIZE 400 SQ M
LOCATION GROUND FLOOR SCHLOSS





KAMINSTÜBERL
SCHLOSS

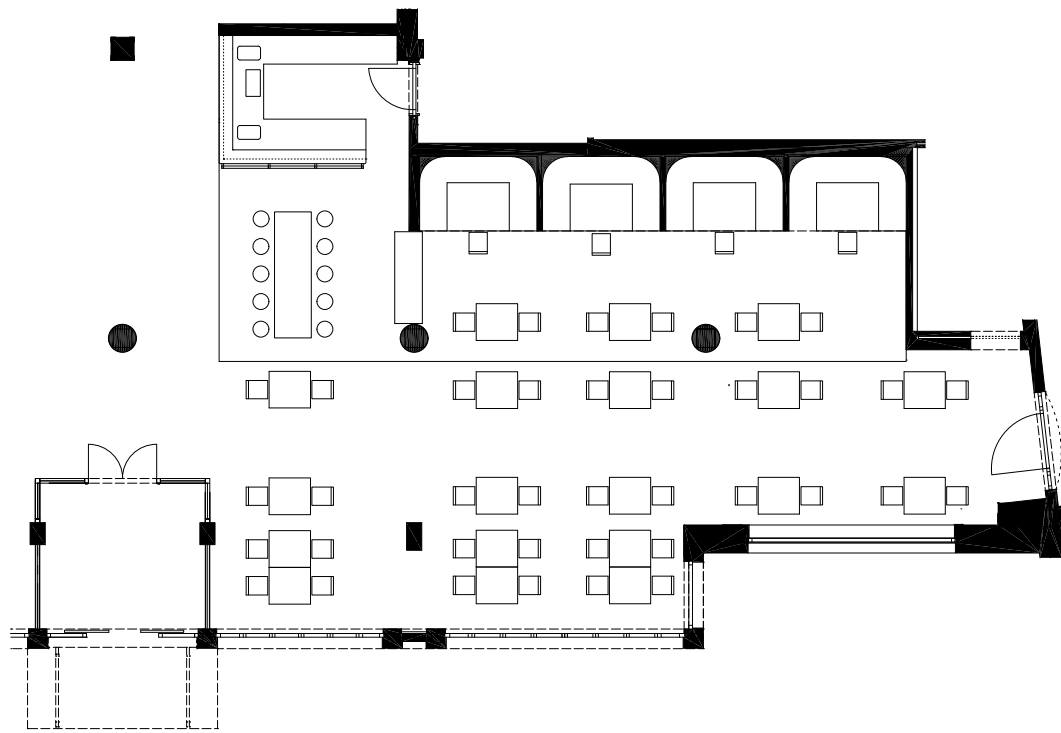


BANQUET 40 PERSONS

ROOM SIZE 100 SQ M
LOCATION GROUND FLOOR SCHLOSS



TUTTO MONDO
RETREAT

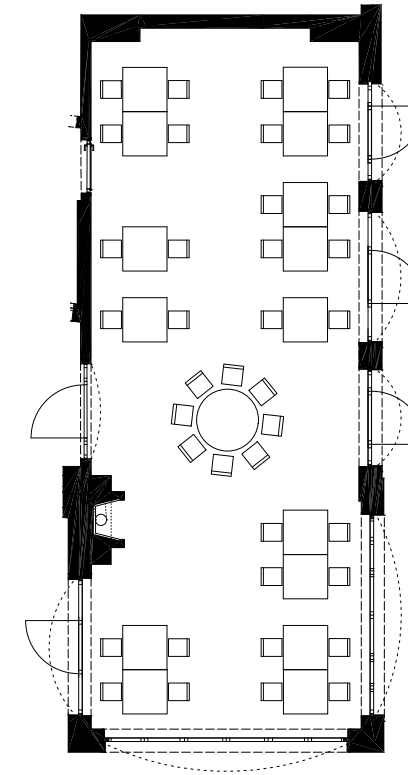


BANQUET 80 PERSONS
ROOM SIZE 175 SQ M
LOCATION GROUND FLOOR RETREAT





SUMMIT
RETREAT



BANQUET 35 PERSONS

ROOM SIZE 95 SQ M
LOCATION GROUND FLOOR RETREAT

ELMAUER ALM

1200 M ABOVE SEA LEVEL.
RUSTIC CABIN WITH OPEN FIREPLACE.
PANORAMIC VIEWS FROM ZUGSPITZE
TO KARWENDEL.

AVAILABLE YEAR-ROUND 18.00 – 24.00 PM.
FOR UP TO 60 PERSONS.
EVERYTHING IS POSSIBLE: FROM SET MENU
TO FONDUE TO OYSTER BAR TO SUSHI.

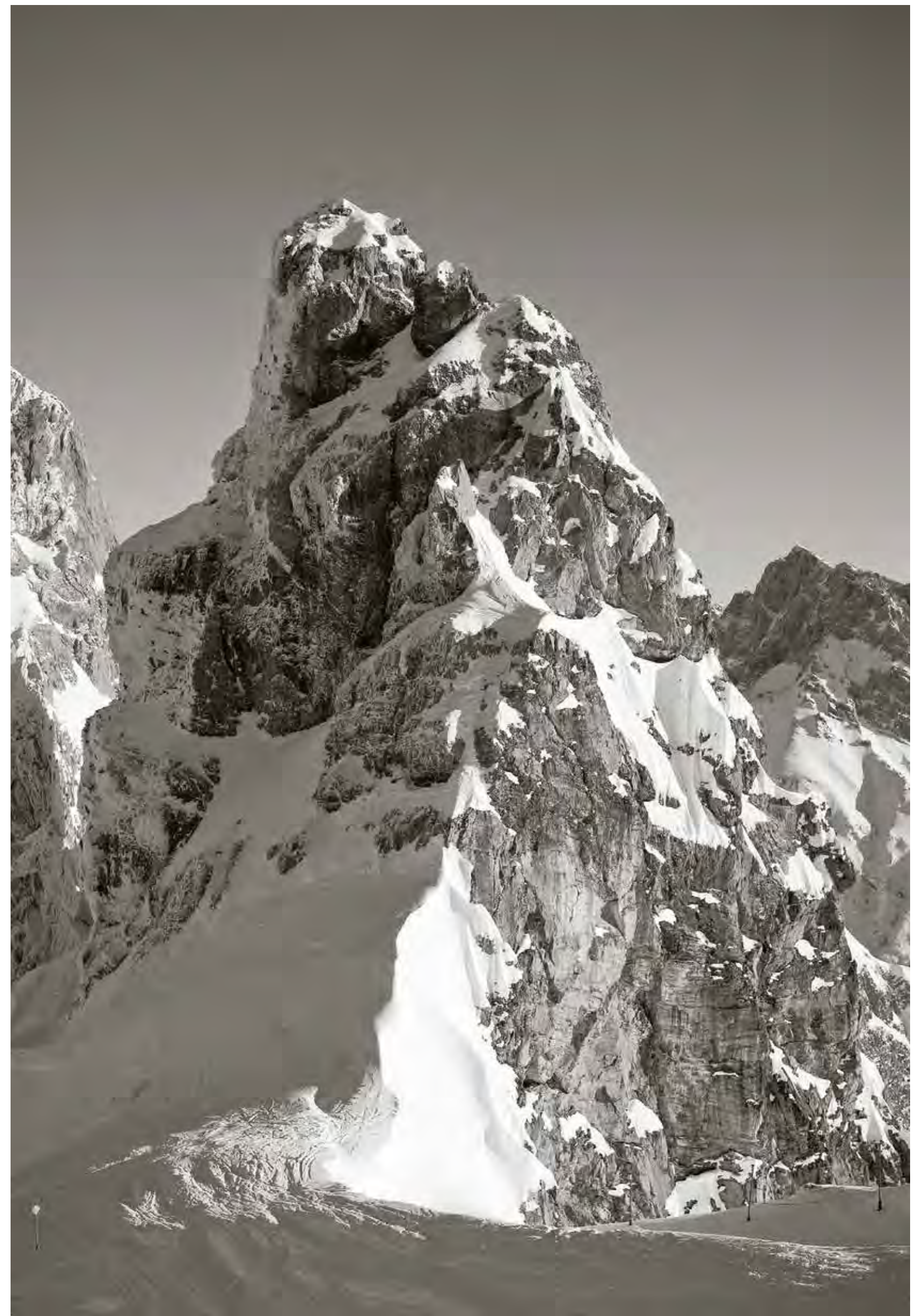
SUNDAY TO THURSDAY:
ROOM RENTAL €450
€3,000 FOOD & BEVERAGE MINIMUM

FRIDAY, SATURDAY AND HOLIDAYS:
ROOM RENTAL €600
€4,000 FOOD & BEVERAGE MINIMUM

NEW YEAR AND CHRISTMAS ON REQUEST.
BANQUET 60 PERSONS.









PUBLISHING CREDITS

Publisher
Schloss Elmau GmbH & Co. KG
In Elmau 2, 82493 Elmau

CEO
Dietmar Mueller-Elmau

General Manager
Nikolai Bloyd

Photos
Will Essig, Sammy Hart,
Dietmar Mueller-Elmau,
Mario Paecke, Thomas Straub,
Bert Heinzlmeier, Christian Kain,
Ulrike Myrzik, Manfred Jarisch,
Kilian Schönberger

Design
Anzinger und Rasp

Litho
Matthias Muschiol

Print
Kastner & Callwey

Subject to change.

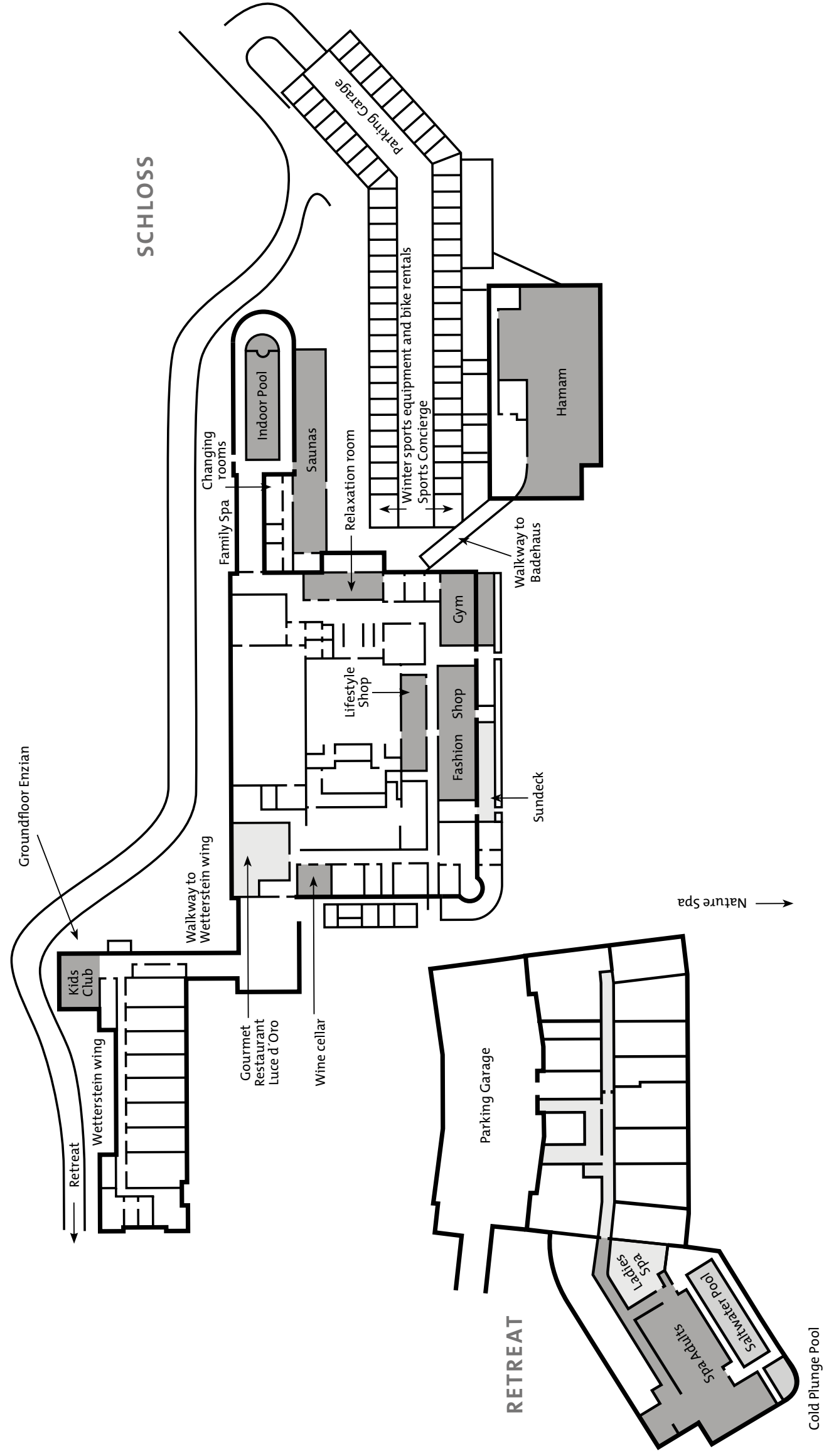


OVERVIEW

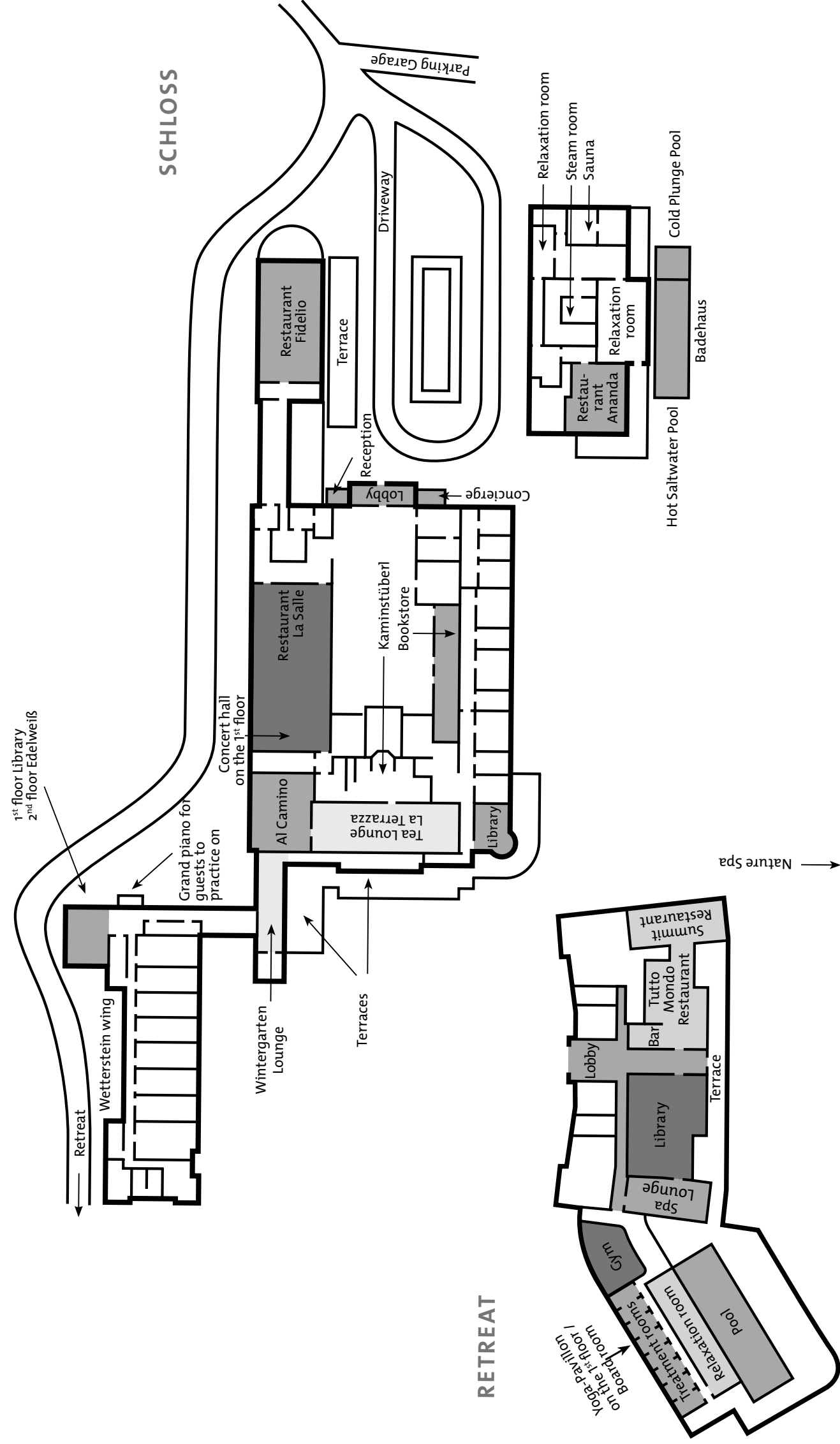
ROOM	BANQUET	THEATER	CLASSROOM	BLOCK	U-SHAPE	LENGTH X WIDTH	HEIGHT	SQ M
CONCERT HALL SCHLOSS	200	250	120	100	80	30 x 13 M	6,5 M	390
CONCERT HALL FOYER	-/-	30	-/-	20	20	9 x 10 M	-/-	90
EDELWEISS SCHLOSS	-/-	-/-	-/-	10	15	6 x 8 M	3 M	48
LIBRARY SCHLOSS	-/-	40	30	20	25	10 x 7 M	4,5 M	70
SILENTIUM SCHLOSS	-/-	-/-	-/-	-/-	-/-	8,5 x 7 M	-/-	60
ENZIAN SCHLOSS	-/-	40	30	20	25	10 x 7 M	4,5 M	70
FIDELIO SCHLOSS	100	150	80	-/-	70	22 x 10 M	4,9 M	200
PAVILION RETREAT	-/-	120	-/-	-/-	40	20 x 6,5 M	3 - 4 M	163
BOARD ROOM RETREAT	-/-	-/-	-/-	8	-/-	6 x 5 M	3 M	30

ALL ROOMS SUPPLIED WITH NATURAL LIGHT.

FLOORPLAN
 UNDERGROUND FLOOR SCHLOSS,
 BADEHAUS AND WETTERSTEIN WING
 UNDERGROUND FLOOR RETREAT



FLOORPLAN
 GROUND FLOOR SCHLOSS,
 BADEHAUS AND WETTERSTEIN WING
 GROUND FLOOR RETREAT



Angela Merkel & Barack Obama at G7 in Schloss Elmau, June 8, 2015.



CONTACT
EVENT@SCHLOSS-ELMAU.DE
TEL +49 (0) 8823 18 0

SCHLOSS@ELMAU.DE
WWW.SCHLOSS-ELMAU.DE


EST. 1928
THE LEADING HOTELS
OF THE WORLD®


VIRTUOSO
PREFERRED HOTEL

AH™
ANDREW HARPER