



# ALTIS GRAND HOTEL



## LOCATION

The Altis Grand Hotel is a 5-star Business & Conference hotel with a unique personality and charm. The hotel is a symbol of sincere and elegant Portuguese hospitality. Located in the city centre, next to the Avenida da Liberdade, its name derives from the country's modern history.

GPS | 38° 43' 15" N 9° 12' 38" W

## CONTACTS

### Altis Grand Hotel

Rua Castilho, 11  
1269-072 Lisboa | Portugal  
T +351 213 106 000  
reservations@altishotels.com

[www.altishotels.com](http://www.altishotels.com)

## ROOMS

The 295 rooms, including 15 suites, have a fabulous view over the historical neighbourhoods of Lisbon and are fully equipped and comfortably decorated. Most suites have a balcony overlooking the city, a gourmet mini-bar and a coffee and tea machine.

- 70 Superior rooms | 23-25m2
- 4 Superior triple rooms | 29m2
- 180 Deluxe rooms | 25-33m2
- 5 Deluxe triple rooms | 29m2
- 3 Exclusive Family suites | 57-82m2
- 21 Deluxe premier rooms | 25-33m2
- 8 Junior suites | 55m2
- 3 Ambassador suites | 85m2
- 1 Presidential suites | 135m2

81 single rooms | 98 twin rooms | 104 double rooms | 9 triple rooms  
21 connecting rooms | 2 adapted rooms for people with reduced mobility

- TV LCD Full HD
- Air conditioning
- Safe
- Hairdryer 2000W
- Free WIFI Internet access
- Soundproofing
- Coffee machine and electric kettle
- Bathrobes and slippers
- Fire Alarm
- Turndown service
- Minibar
- Marshall columns in the suites

## SERVICES

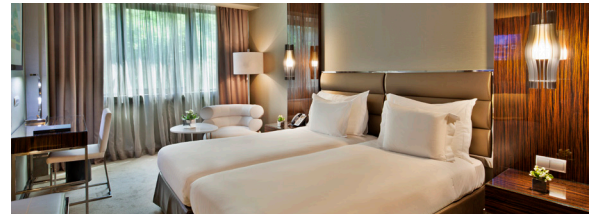
- AC adapter (subject to availability)
- Babysitting (on request)
- Business centre
- Hairdresser
- Audio-visual equipment
- Art Gallery
- Stores
- Garage | Parking
- Laundry and dry cleaning
- GSpa
- Doctor (on request)
- Rent-a-car
- Car washing service
- 24h room service and reception
- Free shuttle service between the Altis Hotels and the Airport
- Valet
- Free WIFI Internet access
- 18 meeting rooms

## RESTAURANTS & BARS

With a panoramic view over the city, the renovated Restaurant Grill D. Fernando offers contemporary and classic dishes .

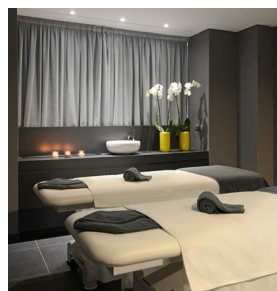
If you are looking for something a little more relaxed, try the new Rendez vous Bistro, where you can enjoy the creative and varied cuisine available between 12:00 and 22:30.

For moments of tranquillity, you can choose between four hotel bars. The Lobby Bar is a comfortable and glamorous space. The Herald Bar offers a fine selection of wines and teas. The S. Jorge Bar, on the 12th floor, has a stunning view over the city and is the perfect spot for an evening cocktail in a totally renewed space maintaining only the signature furniture of the designer Daciano da Costa. For the hottest days and nights, the Garden Roof Bar is the ideal bar to unwind (from May to October).



## GSPA BY ALTIS GRAND HOTEL & SWIMMING POOL

The GSpa by Altis Grand Hotel is a space devoted to improving health and wellbeing. The medical concept spa offers a range of personalised fitness, wellness and cosmetic treatments. The GSpa has an area of 950m<sup>2</sup> which includes a heated indoor swimming pool, jacuzzi, sauna, steam bath, four treatment rooms and one aesthetic medicine cabinet. The fitness centre is fitted with Technogym equipment, including Kinesis stations and a studio for group lessons.



## EVENT ROOMS

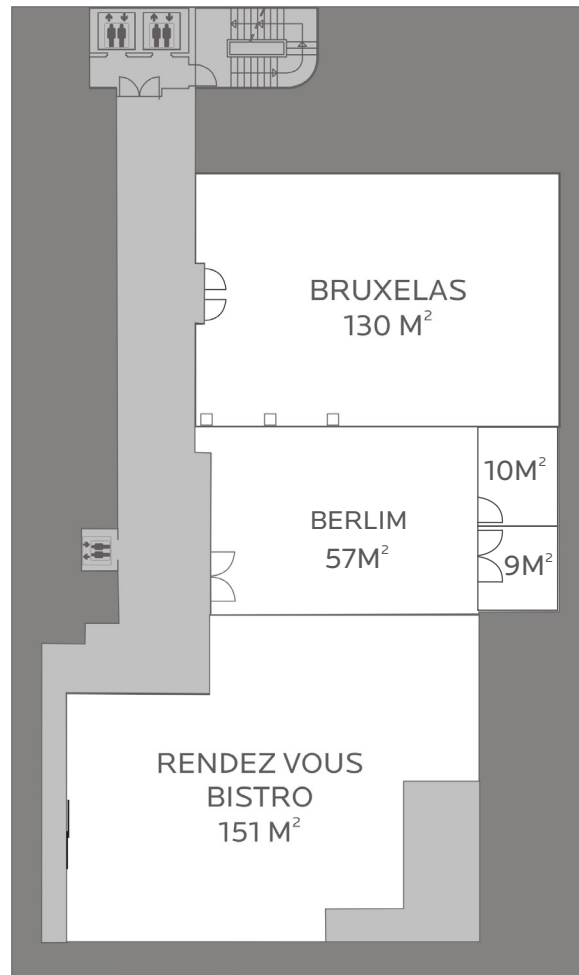
The hotel has a Congress Centre that includes 18 meeting rooms and multi-functional banqueting rooms with a capacity ranging from 10 to 750 people. The rooms are spacious with natural light and panoramic views. The two largest rooms are 360m<sup>2</sup> and 500 m<sup>2</sup>. Our dedicated events team, all of whom have extensive experience, are on hand to take care of the details.



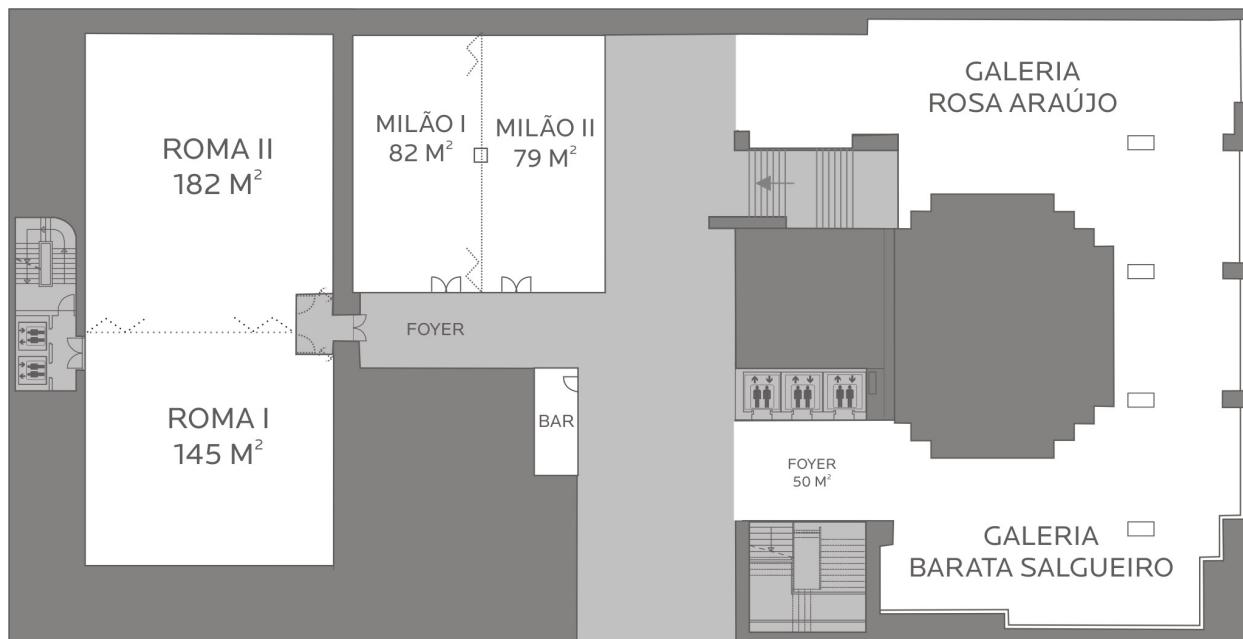
Meeting rooms	Floor	Area (m <sup>2</sup> )	Theater	School	U	Cocktail	Banquet	Cabaret	Boardroom	Dimension C x L x A (m)	Natural light
Londres	-1	500	750	250	120	600	450	225	150	30,5 x 16,5 x 2,70	-
Europa	-1	360	500	220	100	500	380	200	120	29 x 12,5 x 3,70	-
Mónaco	-1	32	40	20	-	15	16	12	20	6,40 x 5 x 2,60	-
Andorra	-1	22	30	15	-	15	16	12	16	4,40 x 5,11 x 2,70	-
Rendez Vous Bistro	0	151	-	-	-	-	66	-	-	12,35 x 12,25 x 2,60	-
Bruxelas	0	130	130	60	45	90	100	50	50	13,60 x 9,50 x 2,60	-
Berlim	0	57	46	16	14	-	32	24	12	9,30 x 6,23 x 2,30	-
Galeria (Rosa Araújo and Barata Salgueiro)	1	600	-	-	-	800	-	-	-	-	✓
Galeria (Rosa Araújo or Barata Salgueiro)	1	300	-	-	-	400	-	-	-	-	✓
Roma I + II	1	345	500	200	100	500	380	180	120	30,3 x 12,3 x 2,60	-
Roma I	1	145	220	80	40	180	50	70	50	12 x 12,5 x 2,60	-
Roma II	1	182	260	100	50	200	130	70	60	15 x 12,5 x 2,60	-
Milão I + II	1	165	100	50	-	110	90	70	-	12,80 x 12,40 x 2,60	-
Milão I	1	82	80	50	25	80	50	25	30	13 x 6,1 x 2,60	-
Milão II	1	79	80	50	25	80	50	25	30	13 x 6,4 x 2,60	-
Rio de Janeiro	2	460	750	250	120	600	400 *	225	150	30,50 x 15 x 2,70	✓
Buenos Aires	2	265	230	100	50	200	180	90	70	22,10 x 14,60 x 2,70	✓
Luanda	2	110	100	50	35	35	70	45	40	12,80 x 8,60 x 2,60	✓
Grill D. Fernando	12	245	-	-	-	-	140	-	-	22,80 x 10,37 x 2,70 + 8,66 x 3,02	✓
Madrid	12	105	110	40	40	90	80	50	50	16,63 x 6,30 x 2,80	✓
Macau	12	25	-	-	-	-	-	-	12	12,80 x 8,60 x 2,60	✓
Lisboa	13	190	190	90	60	170	120	90	30	15,4 x 12,5 x 2,80	✓
Paris I	13	125	130	60	45	90	100	50	50	13,70 x 9 x 2,50	✓
Paris II	13	25	40	12	12	12	10	5	12	6,40 x 5 x 2,60	✓
Porto	13	80	80	40	30	80	50	30	30	9,10 x 8,70 x 2,80	✓

\*650 people when combined with the Buenos Aires room

## Floor 0



## Floor 1

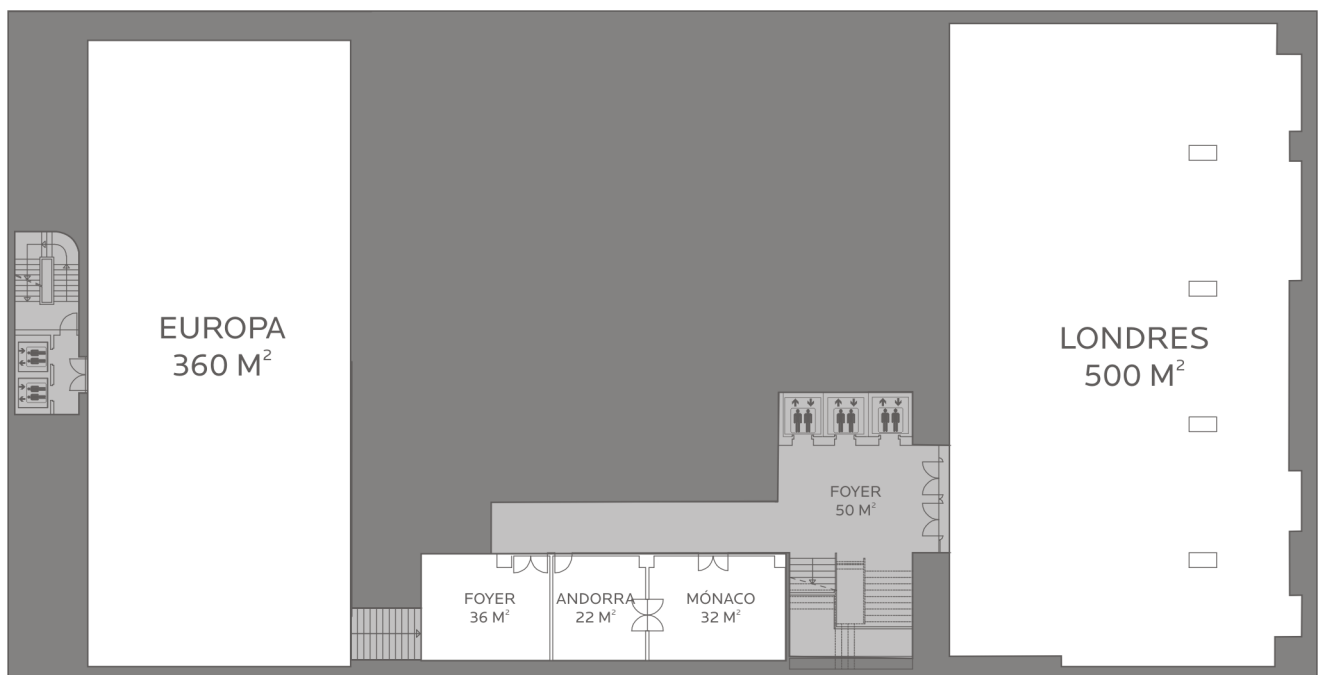


## Floor 2

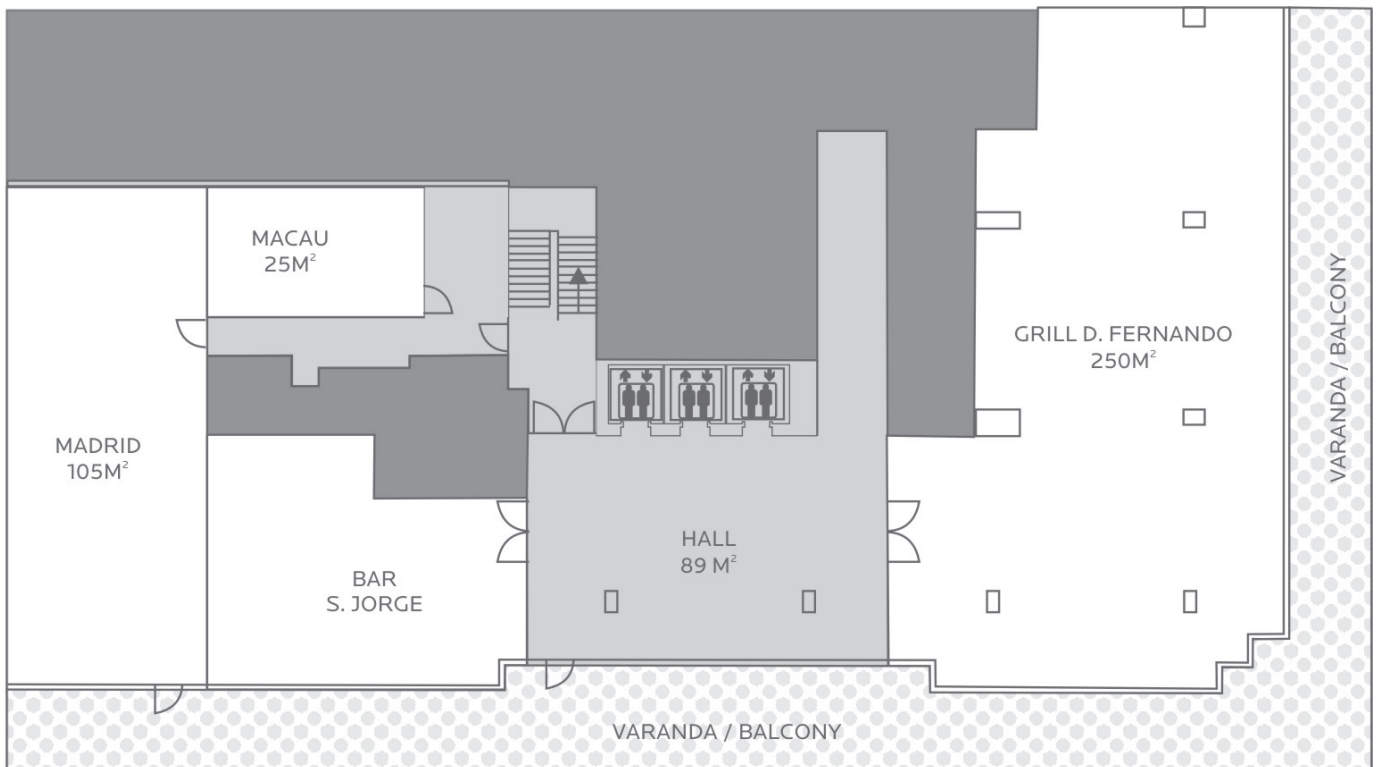


PISO / FLOOR 2

## Floor -1



## Floor 12



## Floor 13

