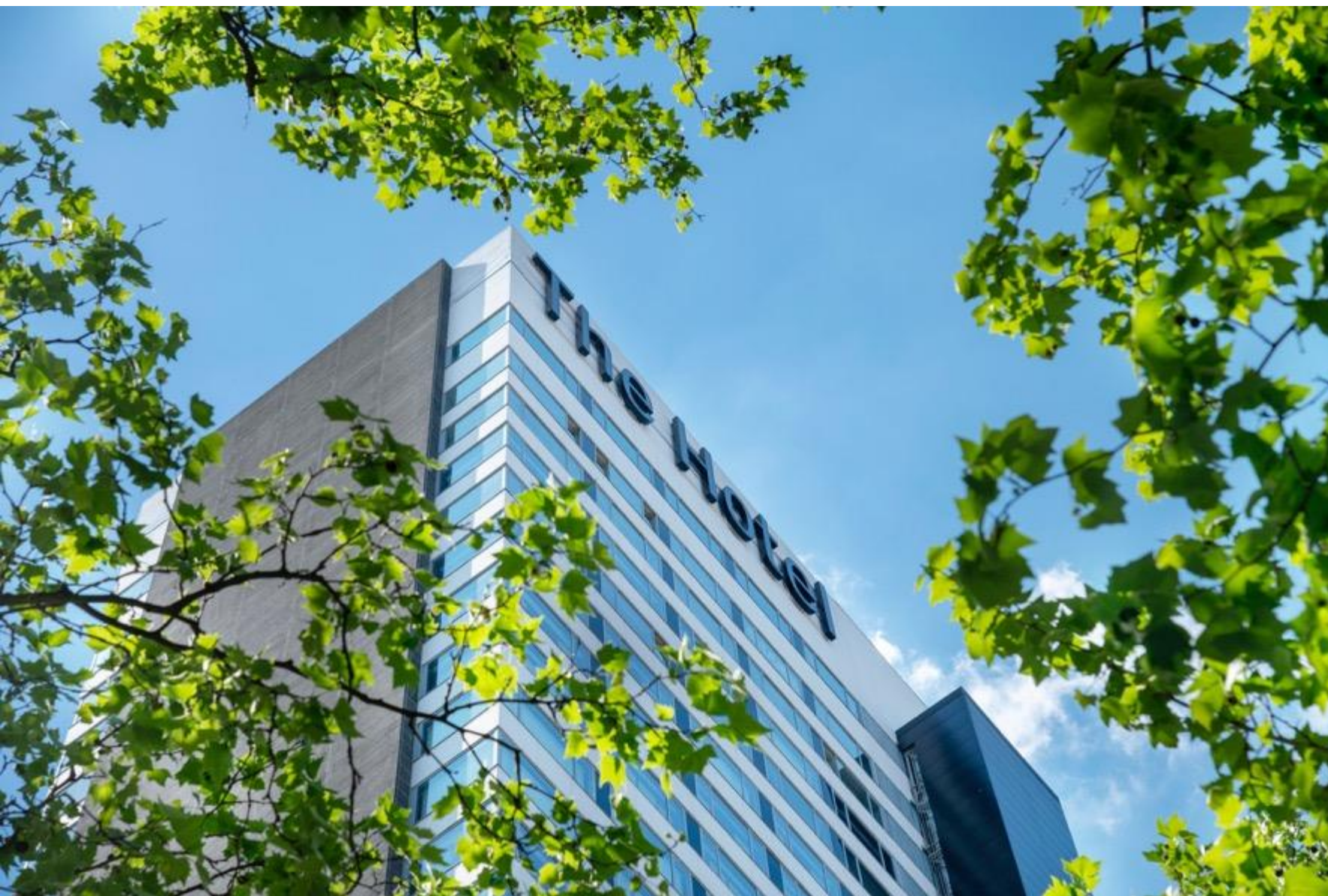


# The Hotel.

BRUSSELS



**THE HOTEL.**  
**BRUSSELS**  
GOING FURTHER  
FOR HEALTHCARE  
MEETINGS

# KEY METRICS

## HEALTHCARE SECTOR MEETINGS

**117**

Healthcare meetings,  
Conferences & Congress held  
at The Hotel Brussels in 2018

**34%**

Total of Healthcare Events  
held at The Hotel Brussels  
With HCP's attending

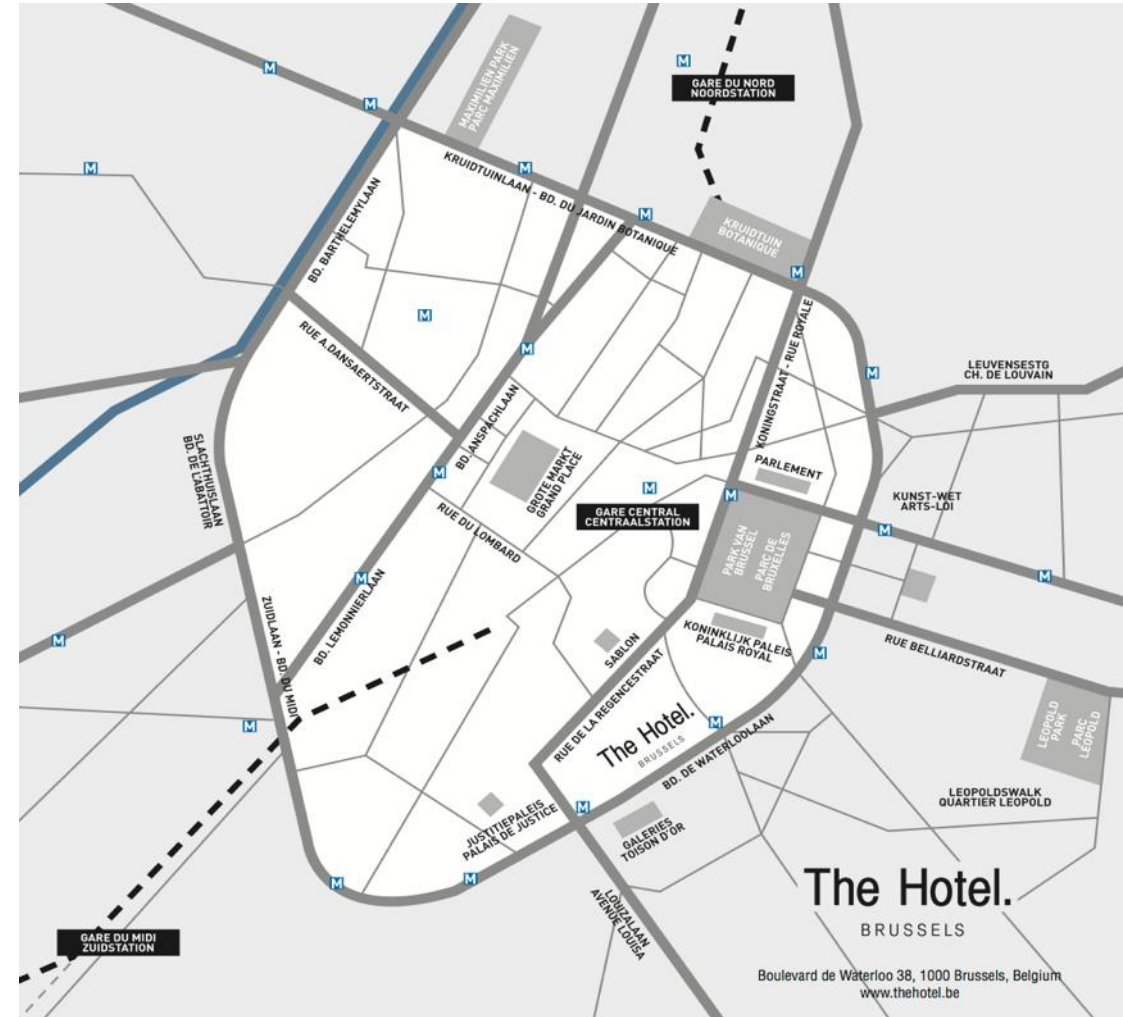
**160**

Average meeting size in  
number of delegates out of  
Healthcare sector meetings





# LOCATION THE HEART OF EUROPE



3D



## THE HOTEL. BRUSSELS INSPIRING VENUE

Occupying a landmark 27-floor tower on the vibrant Boulevard de Waterloo, The Hotel is a byword for cosmopolitan comfort at the heart of the European capital.

The Hotel has built a reputation as the destination of choice for healthcare clients, convinced by the perfect combination of atmosphere and functional meeting facilities







WELCOME

TH

WELCOME

TH

WELCOME

TH



**ROOMS**  
FUNCTIONAL COMFORT







# MEETINGS & EVENTS

## UNPARALLELED EXPERIENCES









Eight functional and modern meeting rooms provide an inspiring environment for professional events, with a panoramic view over the capital and first-rate facilities.

Two ballrooms and an exhibition and reception space offer an ideal, festive setting for celebrations facing the glitz and bright lights of the city.

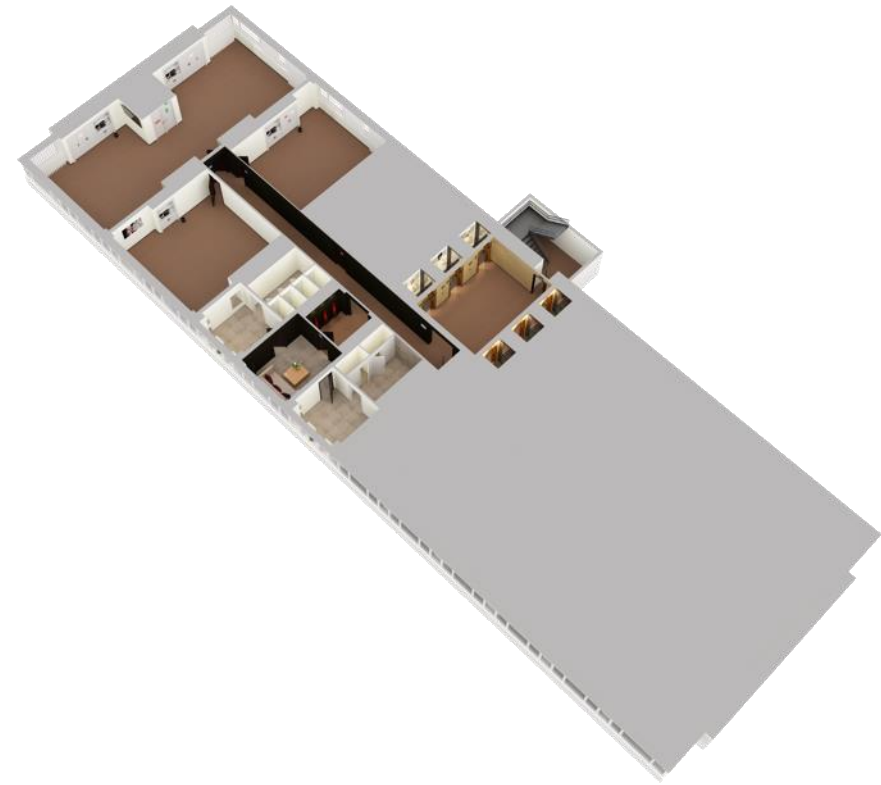




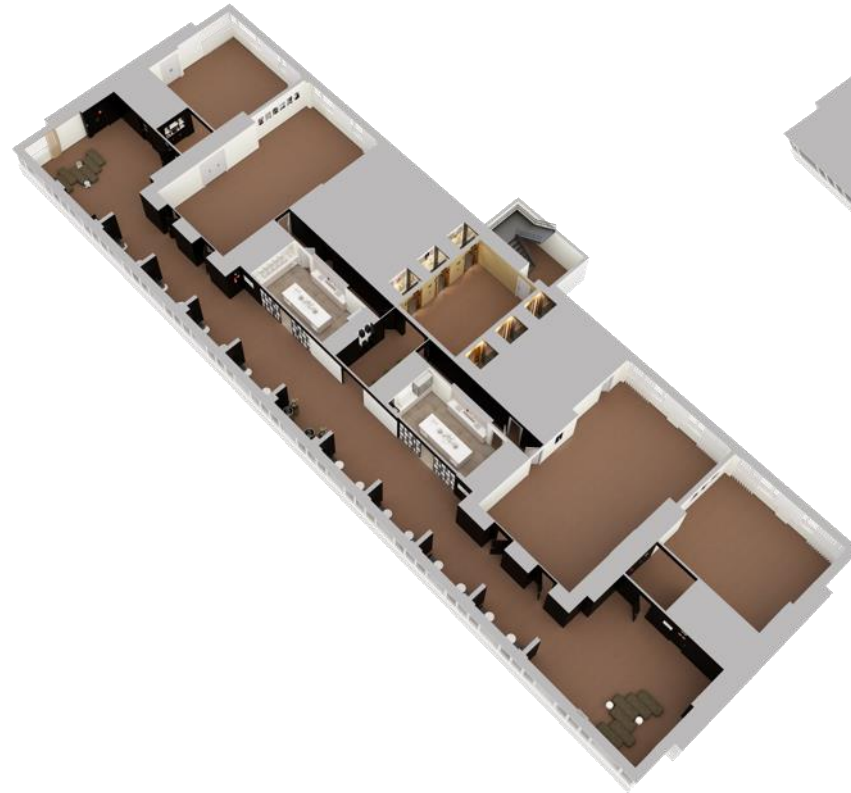




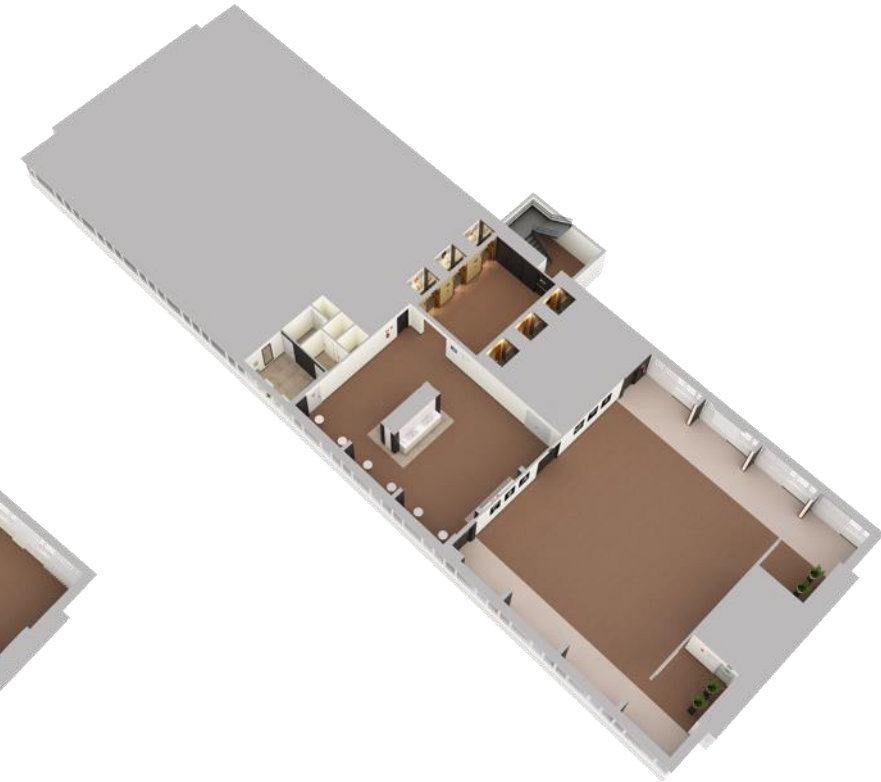
**GROUND FLOOR**  
PARK AND GRAND BALLROOM



**25<sup>TH</sup> FLOOR**



**26<sup>TH</sup> FLOOR**



**27<sup>TH</sup> FLOOR**



 Click on each capacity to view 3D Images.



	Dimensions (m)	SQ(m2)	SQ(ft2)	Height	Theater	Classroom	Cabaret	U-Shape	Boardroom	Banquet	Cocktail
<b>MEET 25 ONE</b>	7,6x7,0	53	570	2	36	24	24	18	16	-	-
<b>MEET 25 TWO</b>	7,0x7,6	53	570	2	36	24	24	18	16	-	-
<b>MEET 25 THREE</b>	15,9x7,1	112	1206	2	62	33	30	18	18	-	-
<b>MEET 26 ONE</b>	13,3x7,6	97	1044	2	72	54	48	36	30	50	50
<b>MEET 26 TWO</b>	9,1x7,1	59	635	2	36	24	25	20	18	32	30
<b>MEET 26 THREE</b>	13,3x6,9	93	1001	2	72	54	48	36	30	50	50
<b>MEET 26 FOUR</b>	9,1x7,1	59	635	2	72	24	25	20	18	32	30
<b>VISTA 27</b>	16,1x11,8	222	2390	2	170	110	90	48	42	140	170
<b>FOYER VISTA 27</b>	8,0x11,5	101	1087	2	-	-	-	-	-	-	90
<b>GRAND BALLROOM</b>	20x19	380	4090	3	350	200	176	63	60	340	400
<b>PARK BALLROOM</b>	17x10	170	1830	3	170	96	88	51	40	140	200
<b>FOYER / EXHIBITION SPACE</b>	46x8	368	3961	3	-	-	-	-	-	-	250



**THE RESTAURANT**  
BY PIERRE  
BALTHAZAR







**VIEWS**  
HIGH-SKY  
THINKING







## A DEDICATED TEAM OF INDUSTRY PROFESSIONALS



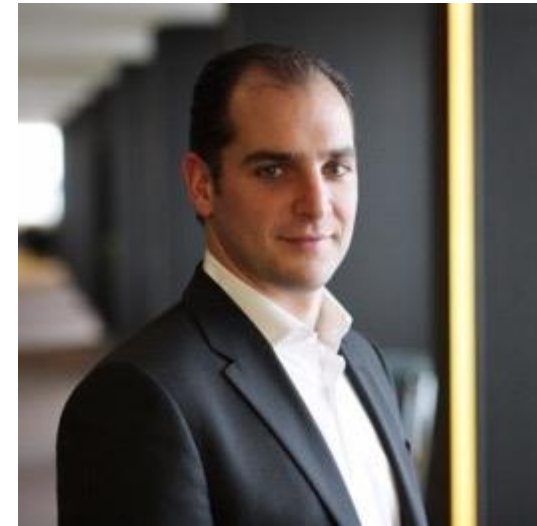
**BENOIT DUBUISSON**  
ACCOUNT DIRECTOR MICE  
HEALTHCARE MEETINGS EXPERT

+32 (0)488 41 19 11  
benoit.dubuisson@thehotel.be



**ALLAN COUEDON**  
F&B SERVICE MANAGER

+32 (0)499 77 96 62  
allan.couedon@thehotel.be



**ALBAN DESBONNET**  
MEETINGS & EVENTS MANAGER

+32 (0)498 63 86 23  
alban.desbonnet@thehotel.be



# CERTIFICATION AND AWARDS



**Green Key**



IN PROGRESS



Boulevard de Waterloo 38  
1000 Brussels - Belgium

T + 32 (0)2 504 11 11 | F + 32 (0)2 504 21 11  
info@thehotel.be

**[www.thehotel.be](http://www.thehotel.be)**